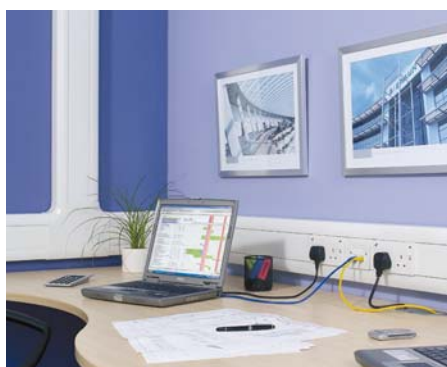


Prestige 3D

mkelectric.co.uk



Prestige 3D is a family of three compartment trunking from MK Electric, which satisfies the growing demands of cable management installations, as well as providing greater trunking depth to cater for Cat 5e, 6 and 7 structured cabling. Prestige 3D is rich in unique features offering greater cabling capacity and improved aesthetics.



**PRESTIGE 3D
DADO AND SKIRTING**

PRESTIGE 3D DADO AND SKIRTING

Prestige 3D Dado and Skirting offers a comprehensive range of Cat 5e, 6 and 7 compliant full 3 compartment trunking with maximum cable capacity.

- Fully Cat 5e, 6 and 7 compliant
- Patented Data Sweep maximises cable capacity without the need for bulbous corners



**PRESTIGE 3D
ANTIBAC BLUE**

PRESTIGE 3D ANTIBAC BLUE

Prestige 3D Antibac Blue offers an antibacterial cable management solution for power and data distribution in environments where hygiene is a priority. Prestige 3D Antibac Blue is designed to kill bacteria which can grow on surfaces such as trunking systems. It uses a silver based additive inherent within the PVCu which acts as an effective weapon in fighting harmful bacteria such as MRSA. Independent laboratory tests show kill rate of >99.9% over a 24 hour period for MRSA, and Klebsiella pneumoniae.

- Improved aesthetics with single piece covers
- All PVC extrusions manufactured from 100% recycled materials*



**PRESTIGE 3D
COMPACT**

PRESTIGE 3D COMPACT

Prestige 3D Compact is a Dado system which has a smaller footprint and offers a solution where space is restricted such as above radiators and below window sills. Cables are run in the top and bottom compartments allowing the full depth of the centre compartment for termination to devices. The Compact range is a lower price alternative especially if there are low quantities of cable to manage.

- 10 Year guarantee

*Based on 2014 consumption



PRESTIGE 3D DADO AND SKIRTING

RANGE INTRODUCTION

Prestige 3D Dado and Skirting offers a comprehensive range of Cat 5e, 6 and 7 compliant compartment trunking with maximum cable capacity.

Prestige 3D meets both the demands for easier and faster installation while maintaining high aesthetics.

HOW TO SPECIFY

A range of 3 compartment Dado and Skirting manufactured from recycled PVCu, designed with a curved covers to compliment MK Logic Plus accessories. Cat 5e, 6 and 7 compliant on all Tees, Angles, Internal and External corners utilising data sweeps that ensure no loss of capacity without the need for bulky protruding covers. Products to have pre-punched bases and divider knockouts at 100mm intervals to facilitate easy installation without the need for drilling and cutting.

FEATURES & BENEFITS

CAT 5E, 6 & 7 COMPLIANT

Flexible Internal and External Corners, moulded Flat Angles and Tees

TOOL FREE CABLE ENTRY

Unique 'open box' mounting frames combined with divider knockouts to provide unhindered tool-free cable entry

MAXIMISES CAPACITY

Innovative External Corner Data Sweep allows continuous cable capacity and maintains the minimum trunking depth

PRE-DRILLED TRUNKING BASES

Eliminates the need to measure and drill fixing holes on site thus reducing installation time

HINGED LID

Supports cables during installation

STYLISH AND ROBUST

Curved outer covers that complement MK Logic Plus accessories

MADE FROM 100% RECYCLED PVCu*

10 YEAR GUARANTEE

*Based on 2014 consumption

MK Electric Catalogue

291

Prestige 3D Dado and Skirting

mkelectric.co.uk



DIVIDER KNOCKOUTS

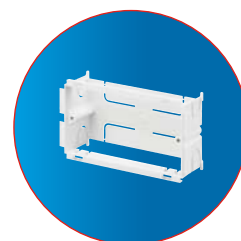
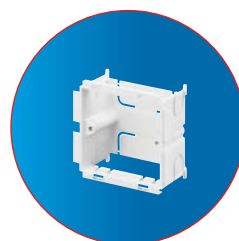
Wiring is also made easy with 50 x 21mm knockouts at 100mm intervals along compartment dividers, providing instant access to mounting boxes, with no drilling or cutting.

BACK BOXES

1, 2 and 3 gang 45mm deep back boxes and 1 and 2 gang 40mm frames ensure Cat 5e, 6 and 7 compliance and ease of connection to power and data devices. The open top/bottom allows unhindered tool free cable entry, through the trunking compartment divider knockout. The back box can slide to align with appropriate knockout (see technical pages for restrictions on use).

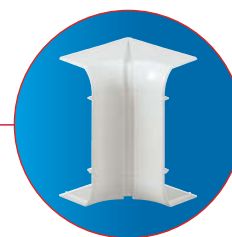
END CAPS

Neatly finishes runs of trunking. (Moulding provides internal location for extra security from optional screw fixing).



PRE-PUNCHED BASES

Wall fixing is simplified by the inclusion of pre-punched oval holes at 100mm intervals, ensures no drilling is required.



INTERNAL CORNER

Designed to accommodate irregularities in the squareness of the corner with a +/- 5 degrees flexibility range. The centre split gives maximum adjustment. Covers are radiused and compatible with Cat 5e, 6 and 7 data cabling requirements.

PART M

Compliance to Part M building regulations can be achieved using Part M flange, charcoal devices or charcoal straight cover.



SCREW FIXING KIT

Where higher security is required, e.g. schools, all fitting covers can be secured using the Screw Fixing Kit.

The Screw Fixing Kit is self-locating on the styling line of the system and has a cover to hide the screw head.



Technical Hotline
+44 (0)1268 563720

Prestige 3D Dado and Skirting



FLAT TEES AND ANGLES

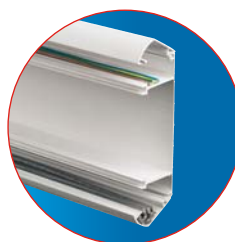
The ingenuity of the patented tee design allows a variety of cable drop permutations. The tee's bridge can be fitted in two positions increasing the versatility of cable runs whilst maintaining the correct segregation and Cat 5e, 6 and 7 compliance. Screw fixing hole locations have a protective shroud to prevent the chafing of cables.

Both the Flat Angle and Tee compartment divider walls are curved (Cat 5e, 6 and 7 compliant) to allow data cables to lay in with no loss of capacity. The covers are one piece and clip securely into place, and the base is also a single moulded item, giving more strength than fabrication. Joint covers are not required where the tee/angle meets the trunking as the moulded covers now overlap the junction.



ELECTROMAGNETIC INTERFERENCE

Additional data cable/signal protection is provided by fitting screening divider VP30.

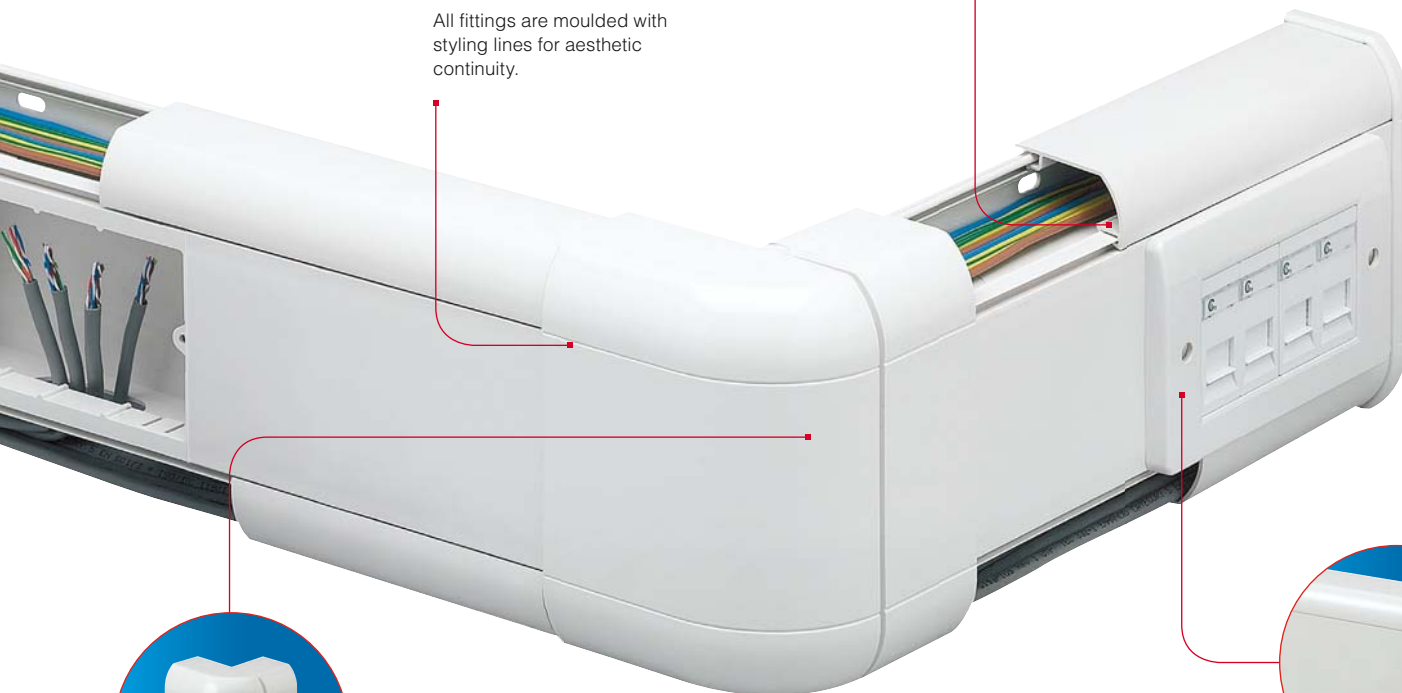


TRUNKING HINGE LIDS

A two stage location gives a hinge effect, enabling cables to be supported by the trunking cover during the installation. Cover design avoids dust traps and makes cleaning easier, and continues the aesthetics of the trunking.

STYLING LINES

All fittings are moulded with styling lines for aesthetic continuity.



EXTERNAL CORNER

External Corners accommodate +/- 5 degree irregularities in the squareness of a corner. Corners come ready assembled to click into place, and offset side splits hide the effect of the split line for aesthetics.



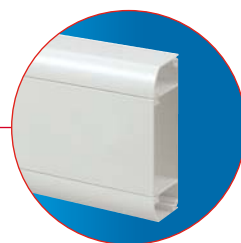
DATA SWEEP

The unique patented Data Sweep provides Cat 5e, 6 and 7 data cabling compliance, with no loss of capacity and without the need for bulky, protruding corner covers.

CHOICE OF TWO PROFILES

Available in Dado and Skirting profiles to suit most installations.

Available in white and charcoal.



Prestige 3D Dado and Skirting

mkelectric.co.uk



Component Selector Chart

Profile Lengths

Main Carrier

3 METRES
6m



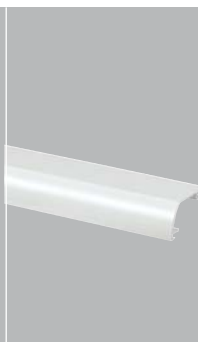
Straight Cover

3 METRES
30m



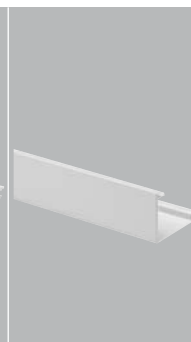
Curved Cover

3 METRES
30m



Square Cover

3 METRES
30m



Fittings

Flexible Internal Corner

2



VP180WHI
VP180CHA

VP100WHI
VP100CHA*

VP110WHI X2
VP110CHA X2

VP181WHI
VP181CHA



VP180WHI
VP180CHA

VP100WHI
VP100CHA*

VP110WHI
VP110CHA

VP115WHI
VP115CHA

VP191WHI
VP191CHA

* Use Charcoal lid to help achieve compliance to Part M



Technical Hotline
+44 (0)1268 563720

Prestige 3D Dado and Skirting

CABLE MANAGEMENT
PERIMETER AND
DISTRIBUTION

Flexible External Corner

CONSISTS OF
COVER AND
DATA SWEEP

2

End Cap

SUPPLIED AS LEFT
AND RIGHT-HAND
PAIR

2

Joint Cover

5

Flat Angle

CONSISTS OF
COVER AND
CARRIER

1

Flat Tee

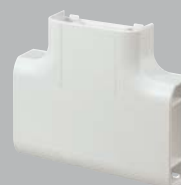
CONSISTS OF
COVER AND
CARRIER

1

Adaptor

SUITABLE FOR
20 AND 25MM CONDUIT
AND YT2 AND YT4
MINI-TRUNKING

10



VP182WHI
VP182CHA

VP183WHI
VP183CHA

VP184WHI
VP184CHA

VP185WHI
VP185CHA

VP187WHI
VP187CHA

VP188WHI
VP188CHA

VP192WHI
VP192CHA

VP193WHI
VP193CHA

VP194WHI
VP194CHA

FLAT ANGLE UP
VP195WHI
VP195CHA

FLAT ANGLE DOWN
VP196WHI**
VP196CHA**

VP197WHI
VP197CHA

VP188WHI
VP188CHA

** These items are fabricated

Prestige 3D Dado and Skirting

mkelectric.co.uk



Accessories

Socket Spacer



VP129WHI
VP129CHA
SOCKET SPACER
25MM WIDE

50
50

Visible width is 9mm after
installation.

Part M Flange and Socket Spacer



VX40CHA
VX40BLU
PART M FLANGE FITTED
BOTH SIDES OF A DEVICE
VX41CHA
VX41BLU
PART M SOCKET SPACER

20
20

10
10

Provides colour contrast with wiring
device to comply with Part M.
Visible width is 25mm after
installation.

Open Back Boxes



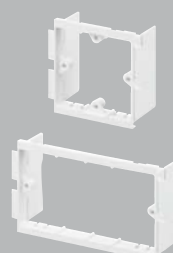
VP121WHI
1 GANG 45MM
OPEN BACK BOX
VP122WHI
2 GANG 45MM
OPEN BACK BOX
VP123WHI
3 GANG 45MM
OPEN BACK BOX

25

10

5

Open Mounting Frames*



VP131WHI
VP131CHA
1 GANG 40MM OPEN
MOUNTING FRAME
VP132WHI
VP132CHA
2 GANG 40MM OPEN
MOUNTING FRAME

25

25

10

10

1 Gang frame is used in vertical
applications.

Wings may be removed for greater
wiring space.

*Open mounting frames are only
suitable where services running in
the centre compartment are the same
as that of the accessory.

MCB/RCD Housing



VP35WHI
MCB/RCD HOUSING
WITH COVER
(ACCESSORY NOT SUPPLIED)

1

Mounts directly to central compartment
of trunking to accept up to 2 x one
module products from the Sentry range
of MCBs and RCDs (excluding one
module RCBOs).

Cable Retainer



VP105WHI
CABLE RETAINER

50

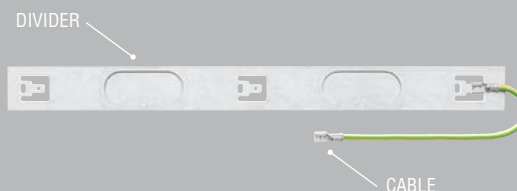
Screw Fixing Kit



VTS1000
SCREW FIXING KIT

20

Screening Divider



VP30**
1.5M SCREENING
DIVIDER
VX31
300MM SCREEN
CONNECTING CABLE

15m

10

** Cable not included



PRESTIGE 3D
ANTIBAC BLUE
INSTALLED WITH
LOGIC PLUS PART
M SWITCH SOCKET
OUTLETS

PRESTIGE 3D ANTIBAC BLUE

RANGE INTRODUCTION

Prestige 3D Antibac Blue offers an antibacterial cable management solution for power and data distribution in environments where hygiene is a priority.

With ongoing concern over hospital acquired infections such as MRSA, the demand for antibacterial products continues to rise. Prestige 3D Antibac Blue is designed to kill bacteria which can grow on surfaces such as trunking systems. It uses a silver based additive inherent within the PVCu which acts as an effective weapon in fighting harmful bacteria such as MRSA, and Klebsiella pneumoniae. MK offer a complete antibacterial solution, by complementing Prestige 3D Antibac Blue with Logic Plus wiring devices, the entire installation will meet the requirements of an antibacterial specification. The trunking and wiring devices are both open to contact, therefore the control of the spread of bacteria and infections can only be effective with a complete solution. MK's Prestige 3D Antibac Blue range will meet the demands of the Healthcare Trusts, Infection Control Departments or Facilities Managers specifying antibacterial products.

HOW TO SPECIFY

A range of antibacterial 3 compartment Dado and Skirting, designed with a curved covers to compliment MK Logic Plus accessories. Products to have Blue fluorescent additive to clearly identify antibacterial properties. Cat 5e, 6 and 7 compliant on all Tees, Angles, Internal and External corners utilising data sweeps that ensure no loss of capacity without the need for bulky protruding covers. Products to have pre-punched bases and divider knockouts at 100mm intervals to facilitate easy installation without the need for drilling and cutting.

FEATURES & BENEFITS

UNIQUE ANTIBACTERIAL SOLUTION

Offers a complete antibacterial solution. >99.9% kill rate against MRSA and Klebsiella pneumoniae

UNIQUE PATENTED FLUORESCENCE

Demonstrable under UV light, providing customer confidence

CAT5E, 6 & 7 COMPLIANT

Flexible internal and external corners, moulded flat angles and tees

TOOL FREE CABLE ENTRY

Unique 'open box' mounting frames combined with divider knockouts to provide unhindered tool free cable entry

MAXIMISES CAPACITY

Innovative external corner data sweep allows continuous cable capacity and maintains the minimum trunking depth

PRE-DRILLED TRUNKING BASES

Eliminates the need to measure and drill fixing holes on site thus reducing installation time

TAMPER RESISTANT

Screw fixing Kit available for installations where higher security is required e.g. public buildings, hospitals, schools

PART M COMPLIANCE

Achievable utilising MK Logic Plus Graphite accessories or Part M Flange or Socket Spacer

10 YEAR GUARANTEE

Prestige 3D Antibac Blue

mkelectric.co.uk



Reports show 300,000 healthcare associated infections were contracted in the UK in 2008, with an annual investment of £270million in infection control.

- Healthcare associated infections cause 5000 deaths a year, at a cost of £1billion.
- Patients recovering from such infections spend on average 10 extra days in hospital, which costs the NHS three times their original treatment.
- The use of antibacterial products supports the existing infection control initiatives such as hand hygiene and barrier nursing.



PRESTIGE 3D **ANTIBAC BLUE** INSTALLED WITH MEIGAN SOCKET OUTLETS

HOW DOES PRESTIGE 3D ANTIBAC BLUE WORK?

Prestige 3D Antibac Blue is an antibacterial 3 compartment power and data trunking system designed to kill bacteria which can grow on surfaces.

It uses a silver based additive inherent within the PVCu which acts as an effective weapon in fighting bacteria such as MRSA and other harmful bacteria. The silver additive is a bactericide and will therefore kill bacteria instead of just restricting their growth.

As the additive is inherent within the PVCu compound the antibacterial protection runs throughout the products themselves. There is no loss of protection where the trunking lengths are cut on-site or if the trunking surface becomes scuffed or scratched.

The antibacterial additive depends on intimate contact between surfaces of the trunking and the user, so any barriers such as dirt or grime will reduce or negate the antibacterial effect.

Prestige 3D Antibac Blue is not intended to replace standard cleaning regimes. It is an additional protection which can only operate efficiently if the surfaces are kept free of dirt and grime.

The antibacterial additive used in Prestige 3D Antibac Blue is registered with the Environmental Protection Agency (EPA) and compliant with the European Biocidal Products Directive (BPD).

The additive provides effective protection against both gram positive and gram negative bacteria, unlike some other anti-bacterial additives which are only effective against gram positive bacteria.



Technical Hotline
+44 (0)1268 563720

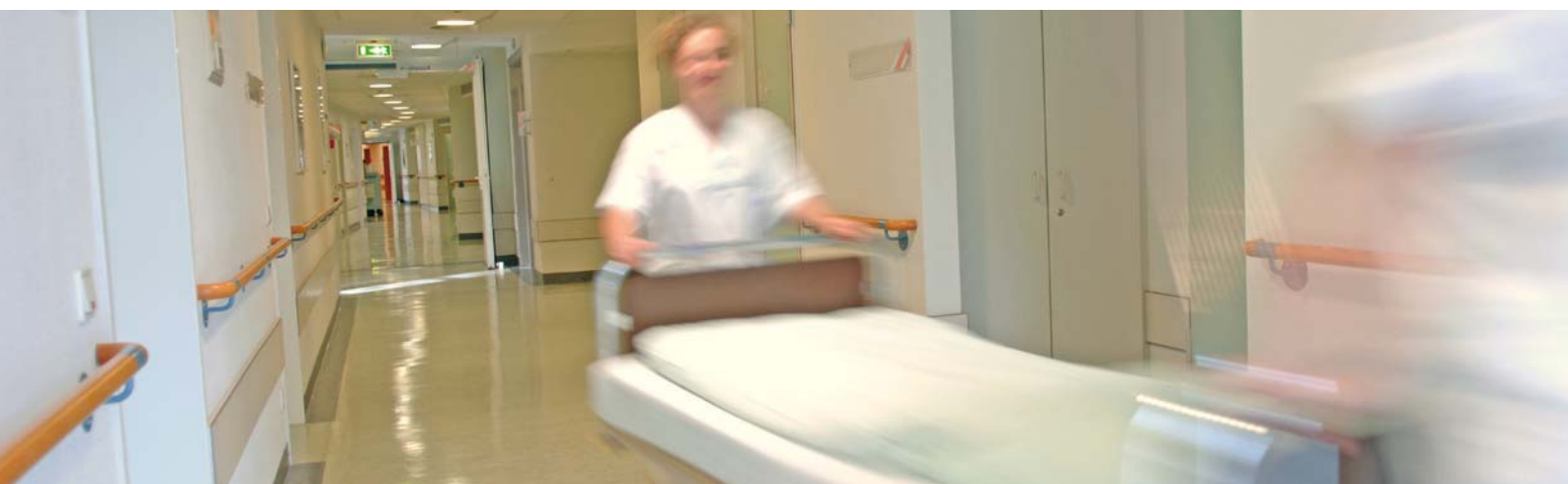
Prestige 3D Antibac Blue

CABLE MANAGEMENT
PERIMETER AND
DISTRIBUTION

MK Electric have commissioned independent tests to verify the antibacterial properties of Prestige 3D Antibac Blue.

The results, collected over a 24 hour period shows results of >99.9% kill rates on the organisms MRSA, and Klebsiella pneumoniae.

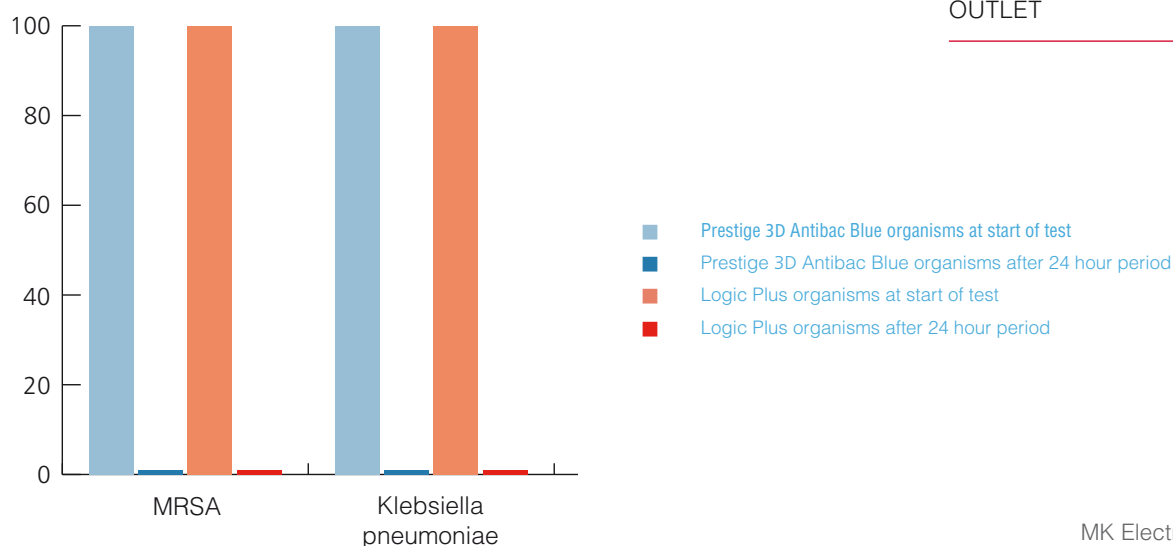
MK Electric have also commissioned independent tests to verify the antibacterial properties of Logic Plus. The results, collected over a 24 hour period shows results of 99.9% kill rates on the organism MRSA and 98.9% kill rates on the organism Klebsiella pneumoniae.



PRESTIGE 3D ANTIBAC BLUE			LOGIC PLUS	
	% ORGANISMS AT START OF TEST	% ORGANISMS AFTER 24 HOUR PERIOD	% ORGANISMS AT START OF TEST	% ORGANISMS AFTER 24 HOUR PERIOD
MRSA	100	<0.1	100	0.1
KLEBSIELLA PNEUMONIAE	100	<0.1	100	1.1



LOGIC PLUS SWITCHSOCKET
OUTLET



Prestige 3D Antibac Blue

mkelectric.co.uk



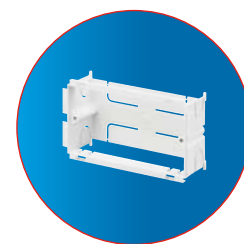
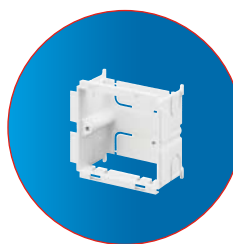
DIVIDER KNOCKOUTS

Wiring is also made easy with 50 x 21mm knockouts at 100mm intervals along compartment dividers, providing instant access to mounting boxes, with no drilling or cutting.



BACK BOXES

1, 2 and 3 gang 45mm deep back boxes and 1 and 2 gang 40mm frames ensure Cat 5e, 6 and 7 compliance and ease of connection to power and data devices. The open top/bottom allows unhindered tool free cable entry, through the trunking compartment divider knockout. The back box can slide to align with appropriate knockout (see technical pages for restrictions on use).



END CAPS

Neatly finishes runs of trunking. (Moulding provides internal location for extra security from optional screw fixing).



PRE-PUNCHED BASES

Wall fixing is simplified by the inclusion of pre-punched oval holes at 100mm intervals, ensures no drilling is required.



PART M

Compliance to Part M building regulations can be achieved using Part M flange or charcoal devices.



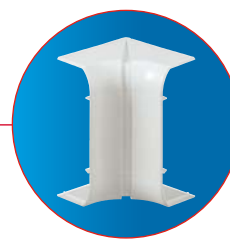
SCREW FIXING KIT

Where higher security is required, e.g. schools, all fitting covers can be secured using the Screw Fixing Kit.

The Screw Fixing Kit is self-locating on the styling line of the system and has a cover to hide the screw head.

INTERNAL CORNER

Designed to accommodate irregularities in the squareness of the corner with a +/- 5 degrees flexibility range. The centre split gives maximum adjustment. Covers are radiused and compatible with Cat 5e, 6 and 7 data cabling requirements.



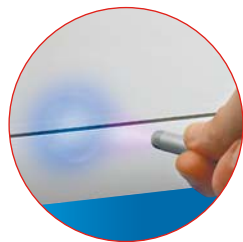


Technical Hotline
+44 (0)1268 563720

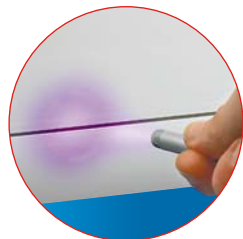
Prestige 3D Antibac Blue

UNIQUE FLUORESCENCE

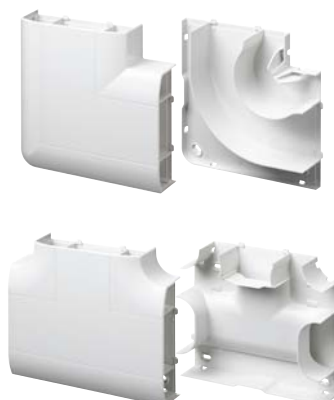
For complete customer confidence, Prestige 3D Antibac Blue features a patented fluorescent additive which glows bright blue under a UV light, unlike standard PVCu which glows dull purple.



PRESTIGE 3D ANTIBAC BLUE



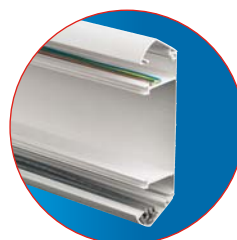
PRESTIGE 3D



FLAT TEES AND ANGLES

The ingenuity of the patented tee design allows a variety of cable drop permutations. The tee's bridge can be fitted in two positions increasing the versatility of cable runs whilst maintaining the correct segregation and Cat 5e, 6 and 7 compliance. Screw fixing hole locations have a protective shroud to prevent the chafing of cables.

Both the Flat Angle and Tee compartment divider walls are curved (Cat 5e, 6 and 7 compliant) to allow data cables to lay in with no loss of capacity. The covers are one piece and clip securely into place, and the base is also a single moulded item, giving more strength than fabrication. Joint covers are not required where the tee/angle meets the trunking as the moulded covers now overlap the junction.

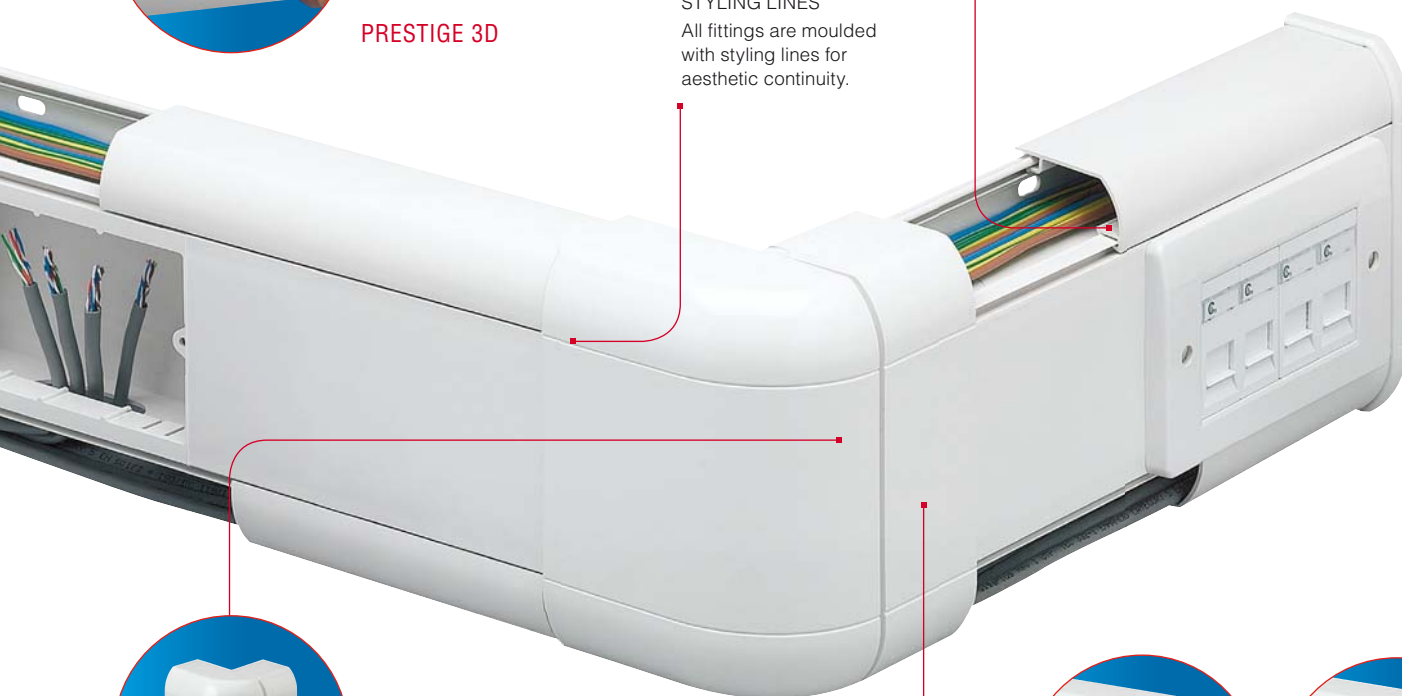


TRUNKING HINGE LIDS

A two stage location gives a hinge effect, enabling cables to be supported by the trunking cover during the installation. Cover design avoids dust traps and makes cleaning easier, and continues the aesthetics of the trunking.

STYLING LINES

All fittings are moulded with styling lines for aesthetic continuity.



EXTERNAL CORNER

External Corners accommodate +/- 5 degree irregularities in the squareness of a corner. Corners come ready assembled to click into place, and offset side splits hide the effect of the split line for aesthetics.

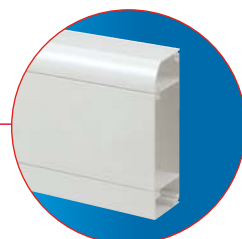
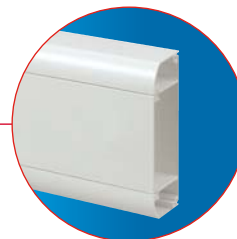


DATA SWEEP

The unique patented Data Sweep provides Cat 5e, 6 and 7 data cabling compliance, with no loss of capacity and without the need for bulky, protruding corner covers.

ELECTROMAGNETIC INTERFERENCE

Additional data cable/signal protection is provided by fitting screening divider VP30.



CHOICE OF TWO PROFILES

Available in Dado and Skirting profiles to suit most installations.

Prestige 3D Antibac Blue

mkelectric.co.uk



Profile Lengths

Component
Selector
Chart

**Main
Carrier***

3 METRES
6m

**Straight
Cover**

3 METRES
6m

**Curved
Cover**

3 METRES
30m

**Square
Cover**

3 METRES
30m

Fittings

**Flexible
Internal
Corner**

2

**Flexible
External
Corner**

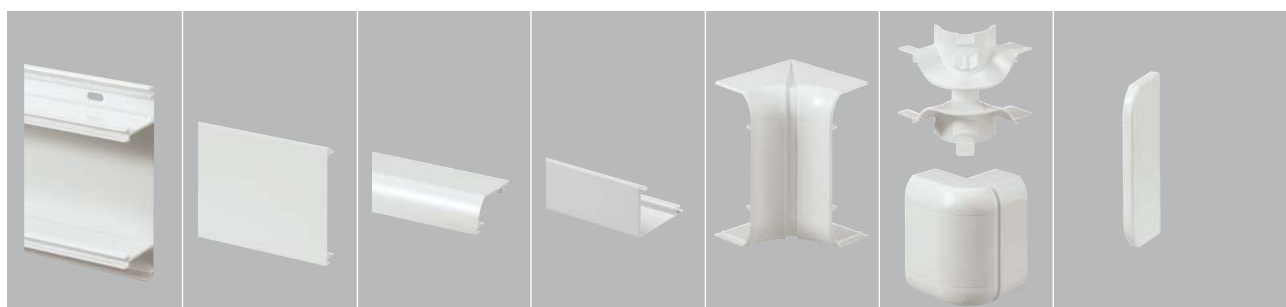
CONSISTS OF
COVER AND
DATA SWEEP

2

End Cap

SUPPLIED
AS LEFT AND
RIGHT-HAND
PAIR

2



VP180WHI

VPAB100WHI

VPAB110WHI
X2

VPAB181WHI

VPAB182WHI

VPAB183WHI



VP180WHI

VPAB100WHI

VPAB110WHI

VPAB115WHI

VPAB191WHI

VPAB192WHI

VPAB193WHI

* Carrier components do not require the antibacterial additive as they have no exposure once the installation is complete. As such, the standard main carrier is sufficient, as are standard back boxes, mounting frames and cable retainers. The carrier components of the External Corner, Flat Angle and Flat Tee are also standard PVCu due to no exposure once installation is complete.



Technical Hotline
+44 (0)1268 563720

Prestige 3D Antibac Blue

CABLE MANAGEMENT
PERIMETER AND
DISTRIBUTION

Accessories

Joint Cover

2

Flat Angle

CONSISTS OF
COVER AND
CARRIER

1

Flat Tee

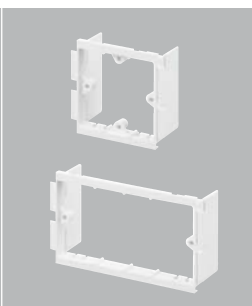
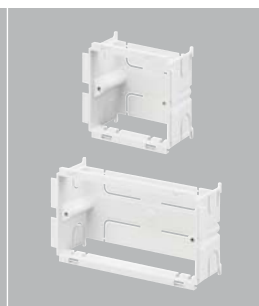
CONSISTS OF
COVER AND
CARRIER

1

Flange and Socket Spacer

Open Back Boxes

Open Mounting Frames*



VPAB184WHI

VPAB185WHI

VPAB187WHI

VXAB40CHA* 20
PART M FLANGE FITTED
BOTH SIDES OF A DEVICE
VXAB41CHA* 10
PART M SOCKET SPACER
VPAB129WHI** 50
SOCKET SPACER

Provides colour contrast with
wiring device to comply with
Part M.

* Visible width is 25mm after
installation.

** Visible width is 9mm after
installation.

VP121WHI 25
1 GANG 45MM
OPEN BACK BOX
VP122WHI 10
2 GANG 45MM
OPEN BACK BOX
VP123WHI 5
3 GANG 45MM
OPEN BACK BOX

VP131WHI 25
1 GANG 40MM OPEN
MOUNTING FRAME
VP132WHI 10
2 GANG 40MM OPEN
MOUNTING FRAME

1 Gang frame is used in vertical
applications.
Wings may be removed for greater
wiring space.

*Open mounting frames are only
suitable where services running in
the centre compartment are
the same as that of the accessory.

VPAB194WHI

FLAT ANGLE
UP
VPAB195WHI

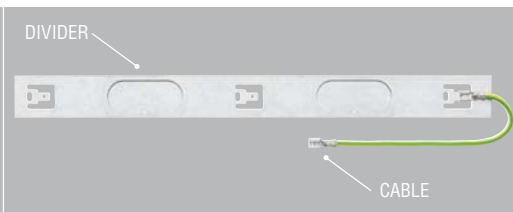
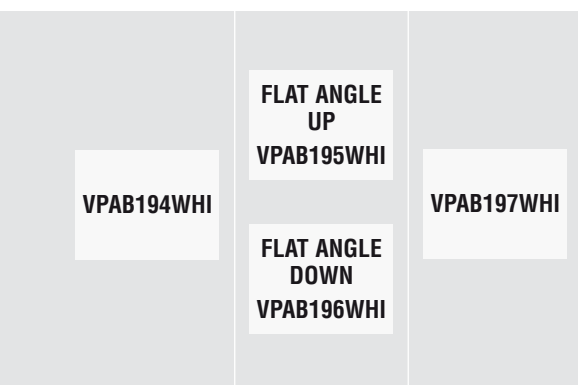
FLAT ANGLE
DOWN
VPAB196WHI

VPAB197WHI

Cable Retainer

Screw Fixing Kit

Screening Divider



VP105WHI 50
CABLE RETAINER

VTSAB1000WHI 20
SCREW FIXING KIT

VP30** 15m
1.5M SCREENING
DIVIDER
VX31 10
300MM SCREEN
CONNECTING CABLE

**Cable not included



PRESTIGE 3D COMPACT

RANGE INTRODUCTION

Prestige 3D Compact completes the 3D offering with all the 3D benefits of faster installation, Cat 5e, 6 and 7 compliance and improved aesthetics, but in a smaller footprint & ideal for confined locations.

The new concept uses the full trunking depth with a sliding open box (frame) principle to ease power and data connections.

HOW TO SPECIFY

A range of compact 3 compartment Dado and Skirting manufactured from recycled PVCu, designed with a curved covers to compliment MK Logic Plus accessories. Cat 5e, 6 and 7 compliant on all Tees, Angles, Internal and External corners utilising data sweeps that ensure no loss of capacity without the need for bulky protruding covers. Products to have pre-punched bases and divider knockouts at 100mm intervals to facilitate easy installation without the need for drilling and cutting.

FEATURES & BENEFITS

CAT5E, 6 & 7 COMPLIANT

Flexible Internal and External Corners, moulded Flat Angles and Tees

TOOL FREE CABLE ENTRY

Unique 'open box' mounting frames combined with divider knockouts to provide unhindered tool-free cable entry

MAXIMISES CAPACITY

Innovative External Corner Data Sweep allows continuous cable capacity and maintains the minimum trunking depth

PRE-DRILLED TRUNKING BASES

Eliminates the need to measure and drill fixing holes on site thus reducing installation time

HINGED LID

Mounting frames for LJU6/Euro data outlets to maximise use of space

STYLISH AND ROBUST

Curved outer covers that complement MK Logic Plus accessories

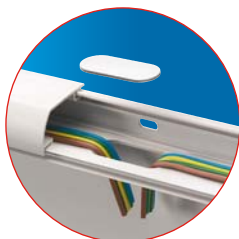
MADE FROM 100% RECYCLED PVCu*

10 YEAR GUARANTEE

*Based on 2014 consumption

Prestige 3D Compact

mkelectric.co.uk

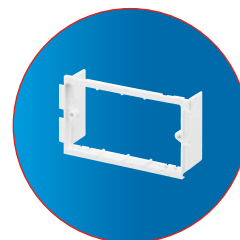
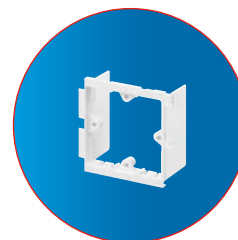


DIVIDER KNOCKOUTS

Wiring is also made easy with 50mm x 21mm knockouts at 100mm intervals along compartment dividers, providing instant access to mounting boxes with no drilling or cutting.

MOUNTING FRAMES

1 gang and 2 gang 'open box' mounting frames use the full trunking depth allowing ease of connection to power and data devices. The open top/bottom allows unhindered tool free cable entry through the trunking compartment divider knockout. The frame can slide to align with appropriate knockout.



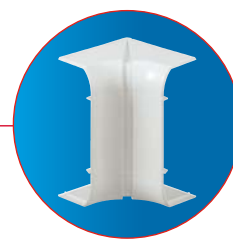
END CAPS

Neatly finishes runs of trunking. Moulding provides internal location for extra security from optional screw fixing.



PRE-PUNCHED BASES

Wall fixing is simplified by the inclusion of pre-punched oval holes at 100mm intervals, ensures no drilling is required.



SCREW FIXING KIT

Where higher security is required, all fitting covers can be secured using the Screw Fixing Kit. The Screw Fixing Kit is self-locating on the styling line of the system and has a cover to hide the screw head.



INTERNAL CORNER

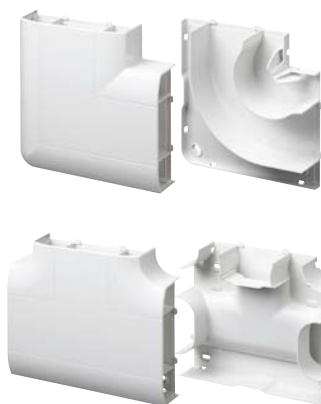
Designed to accommodate irregularities in the squareness of the corner with a +/- 5 degree flexibility range. The centre split gives maximum adjustment. Covers are radiused and compatible with Cat 5e, 6 and 7 data cabling requirements.



Technical Hotline
+44 (0)1268 563720

Prestige 3D Compact

CABLE MANAGEMENT
PERIMETER AND
DISTRIBUTION



FLAT TEES AND ANGLES

The ingenuity of the patented tee design allows a variety of cable drop permutations. The tee's bridge can be fitted in two positions increasing the versatility of cable runs whilst maintaining the correct segregation and Cat 5e, 6 and 7 compliance. Screw fixing hole locations have a protective shroud to prevent the chafing of cables.

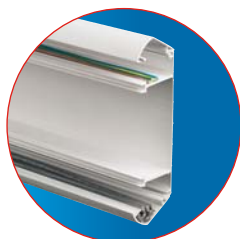
Both the Flat Angle and Tee compartment divider walls are curved (Cat 5e, 6 and 7 compliant) to allow data cables to lay in with no loss of capacity. The covers are one piece and clip securely into place, and the base is also a single moulded item, giving more strength than fabrication. Joint covers are not required where the tee/angle meets the trunking as the moulded covers now overlap the junction.

ELECTROMAGNETIC INTERFERENCE

Additional data cable/signal protection is provided by fitting screening divider VCT30.

STYLING LINES

All fittings are moulded with styling lines for aesthetic continuity.



TRUNKING HINGED LIDS

A patented two stage location gives a hinge effect, enabling cables to be supported by the trunking cover during the installation. Cover design avoids dust traps and makes cleaning easier and continues the aesthetics of the trunking.



EXTERNAL CORNER

External Corners accommodate +/- 5 degree irregularities in the squareness of a corner. Corners come ready assembled to click into place, and offset side splits hide the effect of the split line for aesthetics.



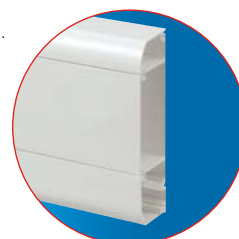
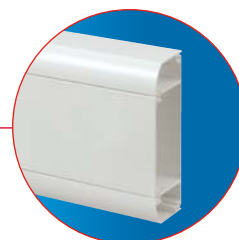
DATA SWEEP

The unique patented Data Sweep provides Cat 5e, 6 and 7 data cabling compliance, with no loss of capacity and without the need for bulky, protruding corner covers.

CHOICE OF TWO PROFILES

Available in Dado and Skirting profiles to suit most installations.

Available in white and charcoal.



Prestige 3D Compact

mkelectric.co.uk



Profile Lengths

Component
Selector
Chart

Main
Carrier

Extension
Carrier

Straight
Cover

Curved
Cover

Extension
Cover

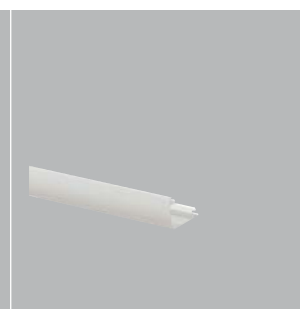
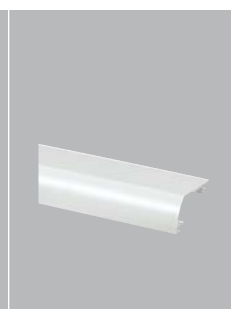
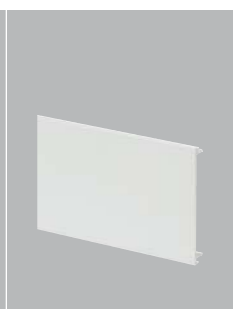
3 METRES
6m

3 METRES
15m

3 METRES
30m

3 METRES
30m

3 METRES
15m



VCT140WHI

VCT100WHI

VCT110WHI X2



VCT140WHI

VCT160WHI

VCT100WHI

VCT110WHI

VCT120WHI



Technical Hotline
+44 (0)1268 563720

Prestige 3D Compact

CABLE MANAGEMENT
PERIMETER AND
DISTRIBUTION

Fittings

**Flexible
Internal
Corner**

2



**Flexible
External
Corner**

CONSISTS
OF COVER
AND DATA
SWEEP

2



End Cap

SUPPLIED AS
PAIR OF LEFT
AND RIGHT-
HAND END
CAPS

2



**Joint
Cover**



**Flat Angle
Up**

CONSISTS OF
COVER AND
CARRIER

5



**Flat Angle
Down**

CONSISTS OF
COVER AND
CARRIER

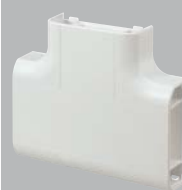
2



Flat Tee

CONSISTS OF
COVER AND
CARRIER

1



VCT141WHI

VCT142WHI

VCT143WHI

VCT144WHI

VCT145WHI

VCT145WHI

VCT147WHI

VCT161WHI

VCT162WHI

VCT163WHI
(2X L/R PAIRS)

VCT164WHI

VCT165WHI

VCT166WHI

VCT167WHI
(UP ONLY)

Prestige 3D Compact

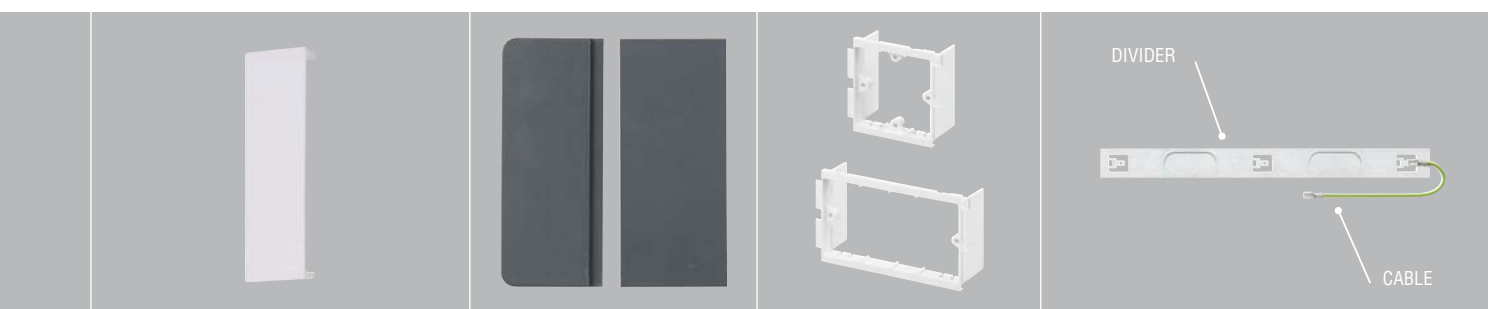
Accessories

Socket Spacer

Part M Flange and Socket Spacer

Open Mounting Frames

Screening Divider



VCT25WHI
SOCKET SPACER

10

Visible width is 9mm after installation.

VX40CHA
VX40BLU
PART M FLANGE FITTED
BOTH SIDES OF A DEVICE
VX41CHA
VX41BLU
PART M SOCKET SPACER

20

20

10

10

Provides colour contrast with wiring
device to comply with Part M.
Visible width is 25mm after installation.

VCT121WHI
1 GANG 40MM
OPEN MOUNTING FRAME
VCT122WHI
2 GANG 40MM
OPEN MOUNTING FRAME

25

10

Wings may be removed for increased
wiring space.

VCT30*
1.5M SCREENING DIVIDER
VX31
300MM SCREEN CONNECTING CABLE

15m

10

* Cable not included

Adaptors

Cable Retainer

Screw Fixing Kit

MCB/RCD Housing

SUITABLE FOR 20 AND 25MM
CONDUIT AND YT2 AND YT4
MINI-TRUNKING. CONSISTS
OF COVER AND CENTRE
COMPARTMENT CABLE BRIDGE



VCT148WHI
FOR USE WITH COVER VCT110WHI

10

VCT105WHI
CABLE RETAINER

50

VTS1000
SCREW FIXING KIT

20

VCT35WHI
MCB/RCD HOUSING WITH COVER
(ACCESSORY NOT SUPPLIED)

1

Mounts directly to central compartment of trunking to accept up
to 2 x one module products from the Sentry range of MCBs and
RCDs (excluding one module RCBOs).



PRESTIGE 2COM

RANGE INTRODUCTION

Prestige 2com trunking is designed to meet the needs of current and future data cabling.

Prestige 2com is Cat 5e, 6 and 7 compliant and provides maximum capacity for data cabling.

HOW TO SPECIFY

A range of 60mm deep 2 compartment Dado trunking manufactured from recycled PVCu, designed with covers to maximise data channel cabling. Cat 5e, 6 and 7 compliant on all Tees, Angles, Internal and External corners to avoid deformation. Products to have pre-drilled trunking bases at 100mm intervals to facilitate easy installation without the need for drilling and cutting.

FEATURES & BENEFITS

CAT 5e, 6 & 7 COMPLIANT

50mm radius bends on all corners so cables lie in trunking correctly to avoid any deformation which may result in signal distortion and loss

MAXIMISES CAPACITY

60mm deep trunking with two equal compartments to maximise data channel cabling

FLEXIBLE ACCESSORIES

Accessories can be mounted on either or both compartments – enables maximum use of wiring space in one compartment

FRAMES MAXIMISE SPACE

Mounting frames for LJU6/Euro data outlets to maximise use of space

STYLISH AND ROBUST

Single piece end caps, corners and couplers for improved aesthetics and solid construction. Screw fix option for security of corner fittings

PRE-DRILLED TRUNKING BASES

Eliminates the need to measure and drill fixing holes on site thus reducing installation time

ALL EXTRUSIONS MANUFACTURED FROM 100% RECYCLED MATERIAL*

* Based on 2014 consumption.

Prestige 2com

mkelectric.co.uk



AESTHETIC PROFILE
Stylish, contoured elegance.

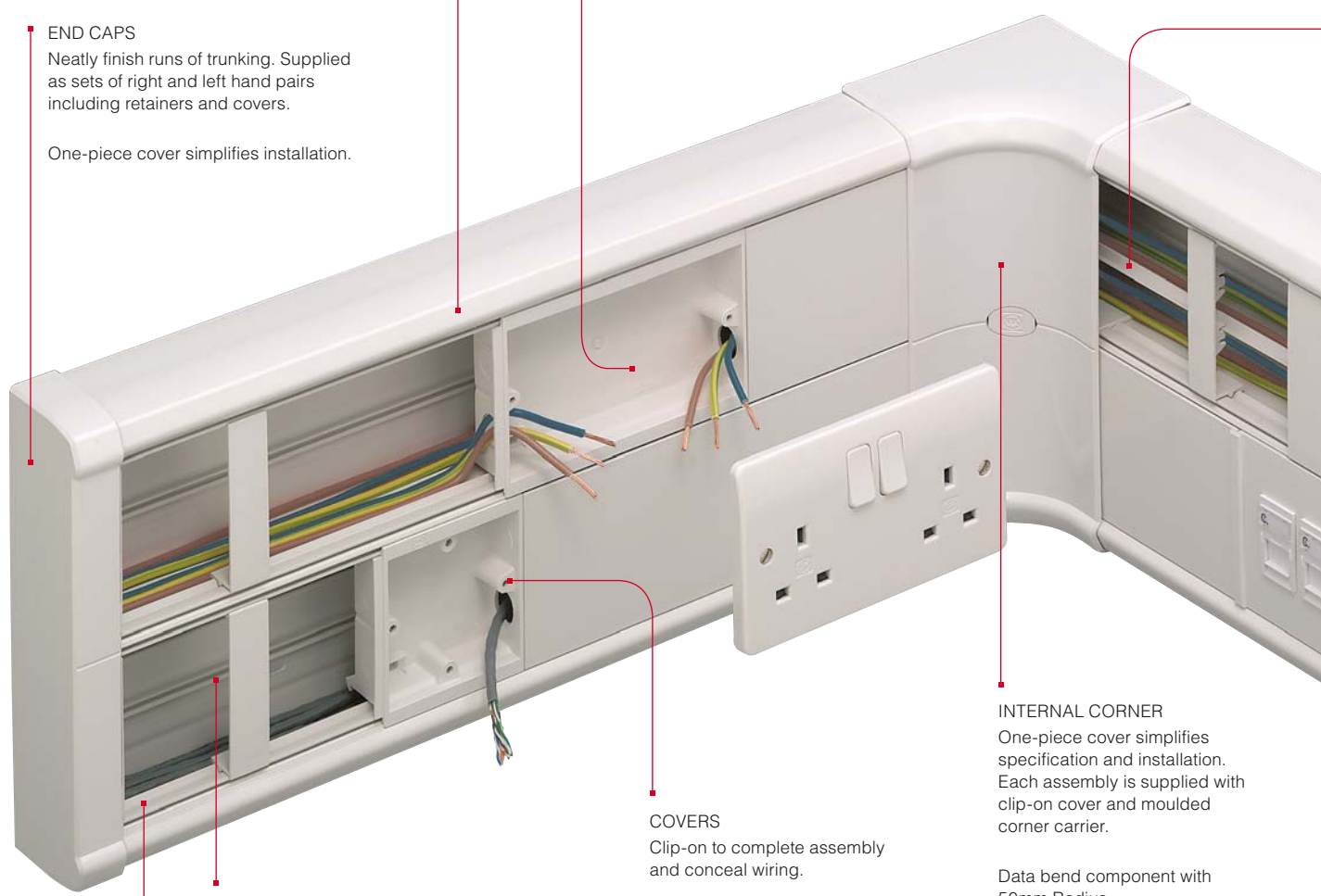
ACCESSORY MOUNTING BOXES AND FRAMES
All boxes have facility to 'knockout' back for greater depth.

35mm boxes for larger cabling size requirements, deep accessories, data and power.

Accessories can be mounted in either or both compartments.

END CAPS
Neatly finish runs of trunking. Supplied as sets of right and left hand pairs including retainers and covers.

One-piece cover simplifies installation.



CABLE RETAINERS
Hold cables securely in place.

COVERS
Clip-on to complete assembly and conceal wiring.

INTERNAL CORNER
One-piece cover simplifies specification and installation. Each assembly is supplied with clip-on cover and moulded corner carrier.

Data bend component with 50mm Radius.

Screw fix option
Unobtrusive screw fixings to maximise security against tampering.

MAIN CARRIER
Pre-drilled at 100mm centres for ease and speed of installation.



Technical Hotline
+44 (0)1268 563720

Prestige 2com



EXTERNAL CORNER

One-piece cover component for ease of assembly and styling. Each assembly is supplied with clip-on cover and moulded corner carriers.

Data bend component with 50mm Radius.

Screw fix option: unobtrusive screw fixings to maximise security against tampering.

FLAT TEES AND ANGLES

These enable the Prestige 2com trunking configuration to follow the contours of the installation in the vertical plane and include 50mm radius inserts to ensure continued data cable protection.



CABLE DIVIDER

Sub-divides internal compartments.

2 COMPARTMENTS

For maximum data cable capacity complete compartment area can be used.

MINI TRUNKING ADAPTORS

For cable distribution to and from Prestige 2com a range of MK mini trunking and Egatube Conduit can be used.

COUPLER

One-piece cover component for ease of assembly. Each assembly is supplied with carrier moulding and clip-on cover (shown below).



CROSSOVER BRIDGE

Permits cabling to cross from one cable compartment to another within the assembly, whilst maintaining segregation.



Prestige 2com

mkelectric.co.uk



Main Carrier

DIMENSIONS
210 X 60MM



VTS2001WHI
3 METRE LENGTHS
VTS2001D1WHI
2 METRE LENGTHS
for (non uk) markets

Not supplied with lid (cover)

Straight Cover



VTS5WHI
3 METRE LENGTHS
VTS5D1WHI
2 METRE LENGTHS
FOR (NON UK) MARKETS

Note each main carrier requires two straight covers

Coupler Assembly



VTS2005WHI

Lid Joint Cover



VTS2010WHI
USED TO JOIN 2 COVER
PIECES AT REMOTE POINT FROM
COUPLER

Cable Retainer



VTS2011WHI
CABLE RETAINER

Crossover Bridge



VTS2090WHI
CROSSOVER BRIDGE

Mini Trunking Adaptor



VTS2081WHI
YT1-YT3 MINI TRUNKING
ADAPTOR.
USE APPROPRIATE YEA ADAPTOR
(YEA1-YEA3) TO CONNECT
MINI TRUNKING
VTS2084WHI
YT4 MINI TRUNKING
ADAPTOR

Socket Spacer



VTS25SWHI
ACCESSORY
SOCKET SPACER
TO ESTABLISH THE
MINIMUM DISTANCE
BETWEEN OUTLETS



Technical Hotline
+44 (0)1268 563720

Prestige 2com

CABLE MANAGEMENT
PERIMETER AND
DISTRIBUTION

Internal Corner Assembly

CONSISTS OF
COVER AND
CARRIER



VTS2004WHI
INCLUDES ADDITIONAL
SCREW FIXING FOR
EXTRA SECURITY
50MM RADIUS BEND

1

VTS2018WHI
SPARE INTERNAL
SCREW COVERS FOR
CORNER PIECES

10

External Corner Assembly

CONSISTS OF COVER,
CARRIER AND
RADIUS INSERT



VTS2003WHI
INCLUDES ADDITIONAL
SCREW FIXING FOR
EXTRA SECURITY
50MM RADIUS BEND

1

VTS2019WHI
SPARE EXTERNAL
SCREW COVERS FOR
CORNER PIECES

10

Radius Insert

EXTERNAL
CORNER



VTS2009WHI
50MM RADIUS BEND
INSERT FOR DATA CABLES
EXTERNAL CORNER

1

End Cap Assembly



VTS2006WHI
END CAP ASSEMBLY

2

Cable Divider



VTS50WHI
CABLE DIVIDER
3 METRE LENGTHS

30m

Mounting Frames



VTS6000WHI
1 GANG
ACCESSORY
MOUNTING FRAME
VTS7000WHI
2 GANG
ACCESSORY
MOUNTING FRAME

10

Flat Tee



VTS2014WHI
50MM RADIUS BEND

1

Flat Angle



VTS2012WHI
50MM RADIUS BEND

1

Prestige 2com

mkelectric.co.uk



Accessory Boxes



VTS6035WHI



VTS7035WHI



VTS8028WHI



VTS4545WHI



VTS4545RWHI

VTS6025WHI 25
1 GANG 25MM DEEP
VTS6035WHI 25
1 GANG
35MM DEEP

VTS7025WH 10
2 GANG 25MM DEEP
VTS7035WHI 10
2 GANG 35MM DEEP
VTS8028WHI 5
3 GANG
28MM DEEP

VTS8035 10
3 GANG 35MM DEEP
K3716 100
BOX EARTH TERMINAL

VTS4545WHI 10
FLAT ADAPTOR PLATE
(NON UK)
45MM X 45MM APERTURE
VTS4545RWHI 10
RAISED ADAPTOR PLATE
(NON UK)
45MM X 45MM APERTURE

Prestige Poles and Posts

PRESTIGE POWER POLES

- Power Poles stand between the floor and ceiling and can be integrated with Interact Underfloor Power as part of a co-ordinated Cable Management system
- Particularly suited to raised floors and suspended ceilings, but can also be used with solid floors and ceilings
- Secured to the floor by a load plate
- A jacking assembly allows adjustment for varying ceiling heights as well as to secure it to the ceiling
- An extension bar is required for stability where the height exceeds 3.6 metres
- Outlet boxes can be located at virtually any height on the poles, so power and data points, light switches and accessory housings can be positioned quickly and easily at the optimum level for efficient operation
- All PVC extrusions manufactured from 100% recycled material*

Prestige Power Poles

PPA100WHI
POWER POLE ASSEMBLY
WITH WHITE PAINTED
ALUMINIUM BODY,
WHITE PVC-U COVER
AND 6 OUTLET BOXES

1

PPA100ALM
POWER POLE ASSEMBLY
WITH ANODISED
ALUMINIUM BODY,
WHITE AND CHARCOAL
PVC-U COVERS
AND 6 OUTLET BOXES

1

PRESTIGE POWER POSTS

- Power Posts stand neatly on the floor and accept cables from below. They are ideal for raised floors but can also be installed on solid surfaces, fed for example from Cablelink Plus Screeded Floor Systems
- Fit unobtrusively under desks, and a single unit will provide up to twelve outlets for any combination of power and data points, light switches and accessory housings
- All PVC extrusions manufactured from 100% recycled material*

* Based on 2014 consumption.

Prestige Power Posts

PPT650WHI
POWER POST ASSEMBLY
WITH WHITE PAINTED
ALUMINIUM BODY,
WHITE PVC-U COVER
AND 5 OUTLET BOXES

1

PPT650ALM
POWER POST ASSEMBLY
WITH ANODISED
ALUMINIUM BODY,
WHITE AND CHARCOAL
PVC-U COVERS
AND 5 OUTLET BOXES

1



Prestige Poles and Posts

Accessories for Poles and Posts



To allow flexibility in matching interior design and colour schemes, the pole and post bodies are available in a white epoxy coated or natural anodised aluminium finish, and the PVCu component covers come in charcoal or white.

The bodies accept a variety of co-ordinated accessories from MK's slim profile Edge and flawless Aspect ranges, to the Logic Plus range, as well as all other MK accessory ranges.

A matching MCB/RCD housing unit is available, also in charcoal or white.



PPC20WHI
OUTLET BOX ASSEMBLY

PPC10WHI
DIVIDING STRIP

PPC40WHI
TOP END COLLAR

PPC60WHI
PPC60CHA

POWER POST END CAP

PPCMHWHI

PPCMHCHA

MCB/RCD HOUSING
AVAILABLE IN A CHOICE OF TWO
COLOURS, WHITE OR CHARCOAL.
ACCEPTS UP TO 4 X ONE MODULE
SENTRY PRODUCTS, EXCLUDING
SINGLE MODULE RCBO'S, UP TO A
MAXIMUM COMBINED RATING OF 63A
(SEE PAGES 279-280).
THE HOUSING UNIT INCLUDES FIXING
KIT, SENTRY MOUNTING DIN RAIL AND
COVER MOULDING.

PPA100LIDWHI
SPARE LIDS
3.6M LENGTHS

1

3m

1

10

10

1

1

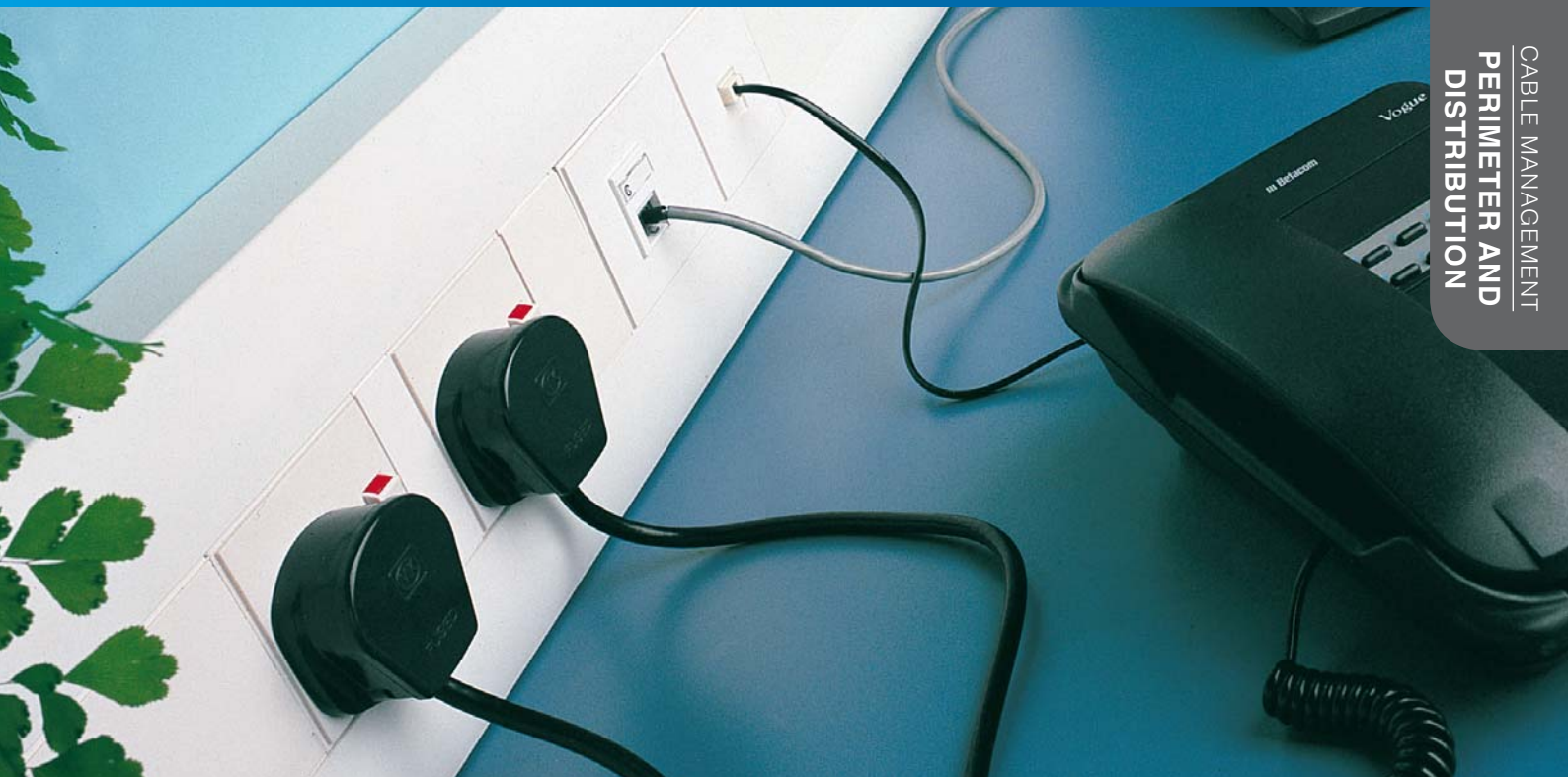
2

PPK1WHI
EXTENSION BAR
FIXING KIT (0.9 METRE) FOR
INSTALLATIONS WHERE THE HEIGHT
FROM FLOOR TO SOLID CEILING
(OR TO STRUCTURAL CONCRETE
WHERE SUSPENDED CEILINGS ARE
INSTALLED) EXCEEDS 3.6 METRES.

PPC50WHI
END LOAD PLATE

1

1



POWERLINK PLUS

RANGE INTRODUCTION

Powerlink Plus is a busbar trunking system developed to meet the power and data distribution needs of offices, schools and laboratories.

A comprehensive range of unique flush fitting accessories and gently curved covers combine to create a visually unrivalled installation. The system offers flexibility to easily adapt to future needs for the installer.

HOW TO SPECIFY

A busbar trunking system manufactured from recycled PVCu designed with plug in flush fitting accessories. Pre-fabricated corners and end caps supplied with carriers and busbar shields to provide maximum flexibility, systems integrity and protection. Pre-drilled trunking bases aid easy assembly and installation.

FEATURES & BENEFITS

CHOICE OF 3 PROFILES

To suit all your skirting and dado requirements

ONE-PIECE CORNER, COUPLERS AND END CAP COVERS

Simplifies installation and improves aesthetics

63A BUSBAR FOR PLUG-ON ACCESSORIES AND HIGH PROTECTIVE CONDUCTOR CURRENT COMPLIANCE

Quick and easy installation, eliminating the requirement for hard wiring

UNIQUE FLUSH FITTING ACCESSORIES

Provide an unobtrusive finish

PRE-DRILLED TRUNKING BASES

Eliminates the need to measure and drill fixing holes on site thus reducing installation time

LARGE DATA CABLING CAPABILITY IN OUTER COMPARTMENTS

For all your communication and data requirements

MADE FROM 100% PVCu

Powerlink Plus is both robust and easily workable on site

ALL EXTRUSIONS MANUFACTURED FROM 100% RECYCLED MATERIAL*

*Based on 2014 consumption.

Powerlink Plus

mkelectric.co.uk



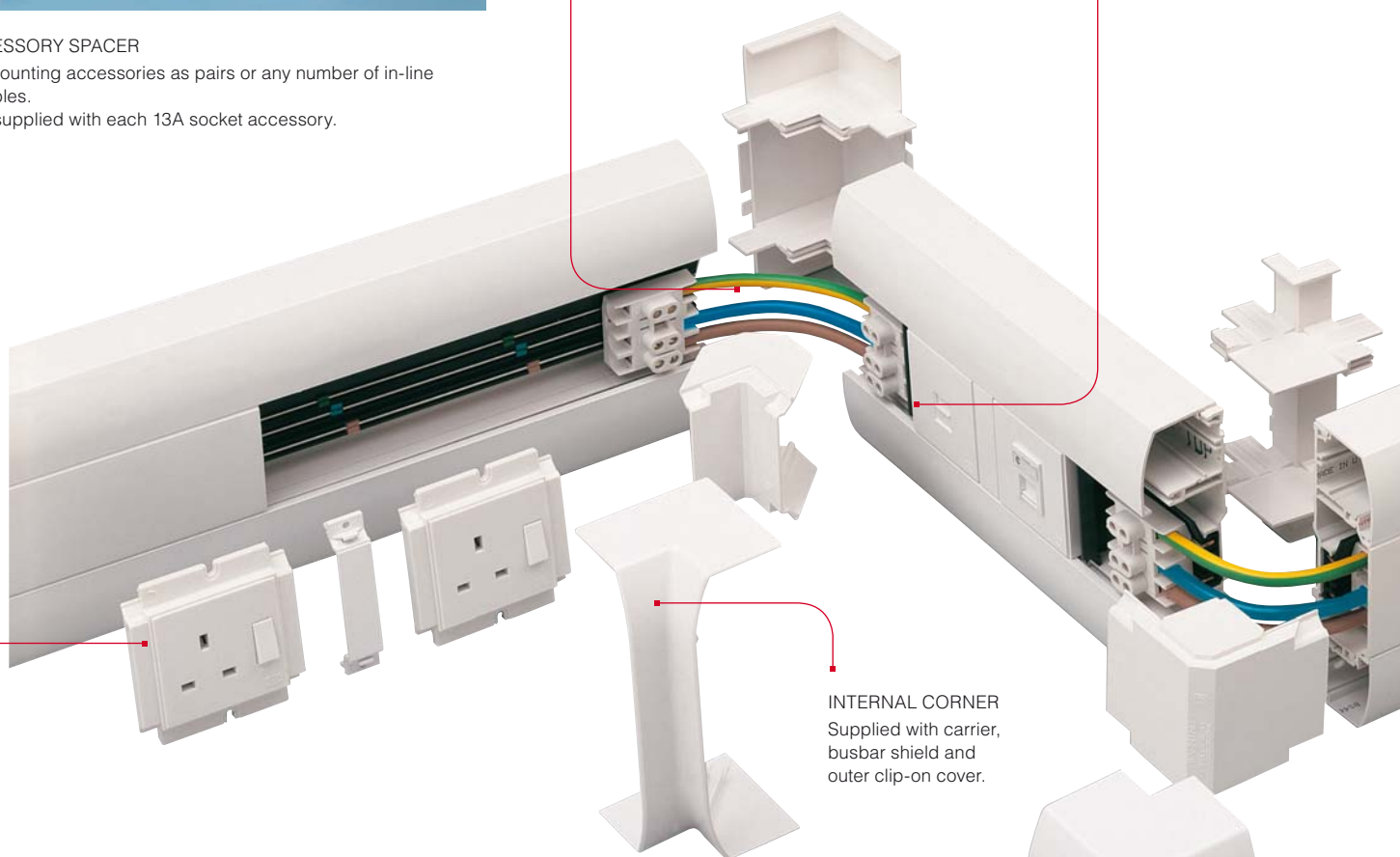
ACCESSORY SPACER

For mounting accessories as pairs or any number of in-line multiples.
One supplied with each 13A socket accessory.

**PRE-WIRED
CABLE ASSEMBLY**
For electrical
connection of busbar
around corners.

FLUSH FITTING ACCESSORIES

Powerlink Plus offers a wide selection of flush fitting accessories, including switch sockets, DP switches, connection units and virtually every type of computer and telecom connector. All power accessories are available as plug-on units or with wire-in terminals. If that is not enough, an optional mounting kit will accept virtually any accessory within the entire MK range.



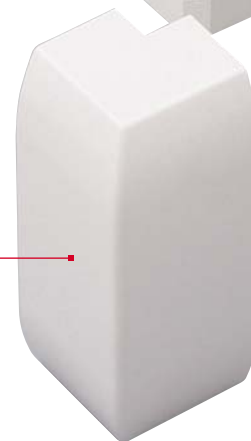
INTERNAL CORNER
Supplied with carrier,
busbar shield and
outer clip-on cover.

CHOICE OF DELIVERY

With Powerlink Plus the choice is yours – hard wiring or an integral 63A busbar with power accessories that simply plug into place.



EXTERNAL CORNER
Supplied with carrier,
busbar shield and
outer clip-on cover.





Technical Hotline
+44 (0)1268 563720

Powerlink Plus

CABLE MANAGEMENT
PERIMETER AND
DISTRIBUTION

MCB/RCD

Housing mounts directly to central compartment and accepts any one or two module product from the MK Sentry range (excluding RCBOs).



COUPLER

Joins trunking lengths together and to pre-assembled angles, crossovers or special corners. Supplied with busbar shield.

END CAP

Neatly finishes runs of trunking. Supplied with screw fix carrier/busbar shield and clip-on cover.



Powerlink Plus

mkelectric.co.uk

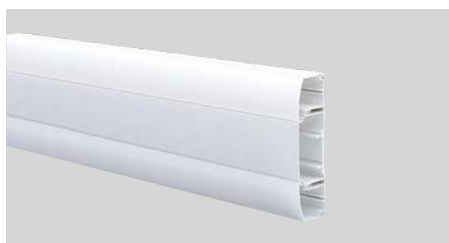


Component Selector Chart

Standard length: 3 metres
Supplied with covers
Trunking size: 170mm (Height) x 50mm (Depth)
With extension fitted:
212mm (Height) x 50mm (Depth)
Material PVCu
Colour: White



**Dado
Trunking
With
Busbars**



**Dado
Trunking
Without
Busbars**



**Skirting
And Dado
Trunking
With
Busbars**

Profile Lengths

Trunking

WITH AND WITHOUT
63 AMP BUSBARS



Coupler

WITH BUSBAR SHIELD



K1963WHI

3m

K1908WHI

5

K1903WHI

3m

K1908WHI

5

K1962WHI

3m

K1945WHI

5



Technical Hotline
+44 (0)1268 563720

Powerlink Plus

CABLE MANAGEMENT
PERIMETER AND
DISTRIBUTION

Fittings

End Caps

SUPPLIED AS A PAIR



K1904WHI
K1904CHA

1
1

Internal Corner

WITH BUSBAR SHIELD



K1905WHI*

1

External Corner

WITH BUSBAR SHIELD



K1906WHI*

1

K1904WHI

1

K1905WHI

1

K1906WHI

1

K1944WHI

1

K1911WHI*

1

K1912WHI*

1

*Requires 1 x 1919 Cable Link Assembly

Powerlink Plus

mkelectric.co.uk



Flat Angle

Flat Tee



**Dado
Trunking
With
Busbars**

K1992WHI*
UP/DOWN

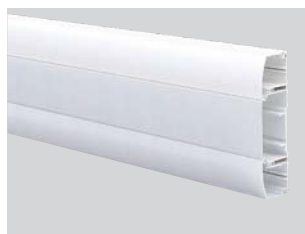
1

K1973WHI
UP
K1972WHI
DOWN

1

1

*Requires 2 x 1919 Cable Link Assembly



**Dado
Trunking
Without
Busbars**

K1992WHI
UP/DOWN

1

K1973WHI
UP
K1972WHI
DOWN

1

1



**Skirting
And Dado
Trunking
With Busbars**

K1957WHI*
UP
K1958WHI*
DOWN

1

1

*Requires 1 x 1919 Cable Link Assembly



Technical Hotline
+44 (0)1268 563720

Powerlink Plus

CABLE MANAGEMENT
PERIMETER AND
DISTRIBUTION

Spares

Cable Retainers



VTS11WHI



VTS12WHI

VTS11WHI
CABLE RETAINERS
FOR USE WITH
EXTENSION
TRUNKING

VTS12WHI
CABLE RETAINERS
FOR USE IN OUTER
COMPARTMENTS

10

Cable Entry Box



1922ALM

10

1922ALM
CABLE ENTRY BOX
FOR USE WITH
K1920 AND K1929

Three compartment flush mounted
box with adjustable plate.
Included in the pack is a template
for positioning on site prior to the
trunking being installed.

DIMENSIONS
133 x 133 x 40mm
KNOCKOUTS
4 x 20mm
4 x 25mm

FLUSH

MCB/RCD Housing



K1949WHI

5

K1949WHI

Mounts directly to the centre
compartment to accept up to 2 one
module products from the MK Sentry
range (except RCBOs).

DIMENSIONS
220mm (Length) x
100mm (Depth)
when mounted on trunking.

Mini Trunking Adaptors



K1926WHI



K1927WHI

1

K1926WHI
YT4MINI TRUNKING
ADAPTOR
FOR USE WITH YEA
ADAPTORS FOR YT1, YT2
AND YT3 TRUNKING

Accepts MK Ega Mini Trunking
adaptors.

Covers and Cable Divider



K1932WHI



K1935WHI



1934WHI



K1936WHI

10

K1932WHI
OUTER COVER
SQUARE
SUPPLIED IN
3 METRE LENGTHS

K1935WHI
OUTER COVER
CURVED
SUPPLIED IN
3 METRE LENGTHS

1934WHI
CENTRAL COVER
STRAIGHT
SUPPLIED IN
3 METRE LENGTHS

K1936WHI
EXTENSION COVER
SUPPLIED IN
3 METRE LENGTHS

3 METRE LENGTHS

15m

15m

15m

15m

Powerlink Plus

mkelectric.co.uk



Socket Outlets

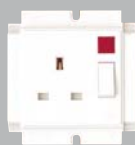
'PLUG-ON'
13 AMP
STANDARD



1956WHI

Switchsocket Outlets

'PLUG-ON'
13 AMP
STANDARD



1950WHI

'PLUG-ON'
13 AMP
NON STANDARD



1953WHI

'WIRE-IN'
13 AMP
STANDARD



1952WHI

'WIRE-IN'
13 AMP
NON STANDARD



1955WHI



1951WHI

1956WHI
STANDARD
SOCKET OUTLET

5

For plugging onto the busbars.
Supplied complete with one
accessory spacer and fixing screws.

1950WHI
STANDARD SWITCHSOCKET
WITH NEON

5

1951WHI
STANDARD
SWITCHSOCKET

5

For plugging onto the busbars.
Supplied complete with one accessory
spacer and fixing screws.

1953WHI
NON STANDARD
SWITCHSOCKET

5

For plugging onto the busbars.
With a 'T' shape earth pin aperture and
for use only with the non standard 13A
Safetyplug, list no. 647.
Supplied complete with one accessory
spacer and fixing screws.

1952WHI
STANDARD
SWITCHSOCKET

5

Fitted with screw terminals for
independent wiring.
Supplied complete with one accessory
spacer and fixing screws.

1955WHI
NON STANDARD
SIDE WIRED
SWITCHSOCKET

5

Fitted with screw terminals for
independent wiring. With a 'T'
shape earth pin aperture and for
use only with the non standard
13A Safetyplug, list no. 647.
Supplied complete with one
accessory spacer and
fixing screws.



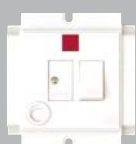
Technical Hotline
+44 (0)1268 563720

Powerlink Plus

CABLE MANAGEMENT
PERIMETER AND
DISTRIBUTION

Connection Units

DP SWITCHED
'PLUG-ON'



1971WHI

DP Switches

32 AMP
'PLUG-ON'



1943WHI

Two Way Switch

20 AMP SP



1942WHI

Telephone Socket Outlets



1995WHI

1970WHI
WITH NEON AND
13A FUSE

5

1971WHI
WITH NEON
FLEX OUTLET AND
13A FUSE

5

For feeding from the busbars and
controlling remote equipment.
Supplied complete with
fixing screws.

1943WHI
WITH NEON

5

For plugging onto the busbars.
Can be used either as a busbar switch
disconnecter or for feeding and
controlling remote equipment.
The switch can accommodate up to
10mm² cables. Supplied complete with
fixing screws.

1942WHI

5

Can be used for lighting and remote
equipment. It is not connected to the
busbars and requires separate cables.
Supplied complete with fixing screws.

1995WHI
HANDSET POLARISED
SOCKET OUTLET

5

1999WHI
RJ11
TELEPHONE/DATA SOCKET

5

1980 Supplied complete with enclosure
box together with fixing screws,
connecting tool, cable tie and fixing
screws for mounting on to the dado
trunking. A full list of instructions
with wiring diagrams is supplied in
every pack. Approved for use with
telecommunication systems run by BT
in accordance with the conditions in the
instructions for use.

1995 Supplied complete with enclosure
box together with fixing screws,
connecting tool, cable tie and fixing
screws for mounting on to the dado
trunking. Approved
for use with telecommunication
branch systems in accordance
with the conditions in the instructions
for use.

Powerlink Plus

mkelectric.co.uk



Data Outlets

RJ45



1978WHI



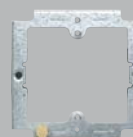
1976WHI

ELV Blank Plates



1986WHI

Flush Accessory Mounting Frames



1928GLV



1946WHI



1998

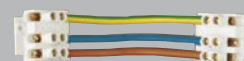


12024SLT9

Trunking Accessories and Plug in Cable Terminations (3 Pole)



K1925WHI



1919



1923WHI



1924WHI

1978WHI
RJ45 CATEGORY 5E
COMPUTER/DATA SOCKET

1976WHI
RJ45/EURO OUTLET
TWO MODULE UNSERVICED

1947WHI
RJ45/LJU6C OUTLET
TWO MODULE, UNSERVICED

1978 Data socket to
Category 5e.

K1976 Euro 50x50mm
(accommodates 2 outlets).

K1947 Cut out dimensions LJU6C 22x37mm
for each outlet.

5 1986WHI
ELV BOX AND COVER

5 Can be punched for use with any ELV
accessory that can be mounted over the
busbars.

5 Supplied complete with enclosure box
together with fixing screws for mounting on
to the trunking.

5 1928GLV
2 GANG ACCESSORY
MOUNTING KIT
WITH FRAME AND
PATTRESS

1946WHI
2 GANG ACCESSORY
MOUNTING KIT
WITH FRAME AND
PATTRESS

1998
1 GANG MOUNTING
FRAME & BOX FOR ELV
ACCESSORIES

12024SLT9
MOUNTING FRAME FOR
2 GANG ACCESSORY

1928GLV For fixing standard single gang
accessories to the trunking. The accessories
can be connected to the busbars by using
one of the cable termination components
or wired separately. Complete with fixing
screws.

1946 For fixing Sentrysockets, Filtered
sockets and two gang accessories to the
trunking. Supplied with busbar terminations
and cover, mounting frame and extension
pattress together with fixing screws.

1998 For fixing standard single gang
extra low voltage outlets to the trunking.
Supplied complete with enclosure box
together with all the necessary fixing
screws.

10 K1925WHI
PLUG IN BUSBAR COUPLER

1919
CABLE LINK ASSEMBLY

5 1923WHI
10MM² CABLE TERMINATION

10 1924WHI
25MM² CABLE TERMINATION

5 K1925 To connect lengths of individual busbars
together. Rating 63A.

1919 Prewired corner cable link for internal and
external corners.
Rating 63A.

1937 Suitable for bridging the central
compartment, where there are no busbars
(Busbars are coupled by cables passing
underneath).

1939 To maintain segregation between the
wall and the busbars or cables when installing
Powerlink around a pillar of less than 125mm.

1923 To connect the busbar to the mains supply
or to electrical accessories mounted onto
mounting frames.
Rating: 50A.

1924 To connect the busbars to the mains supply
and for connecting the busbars around corners
(two required). Rating: 63A.

Trunking Components and Spares



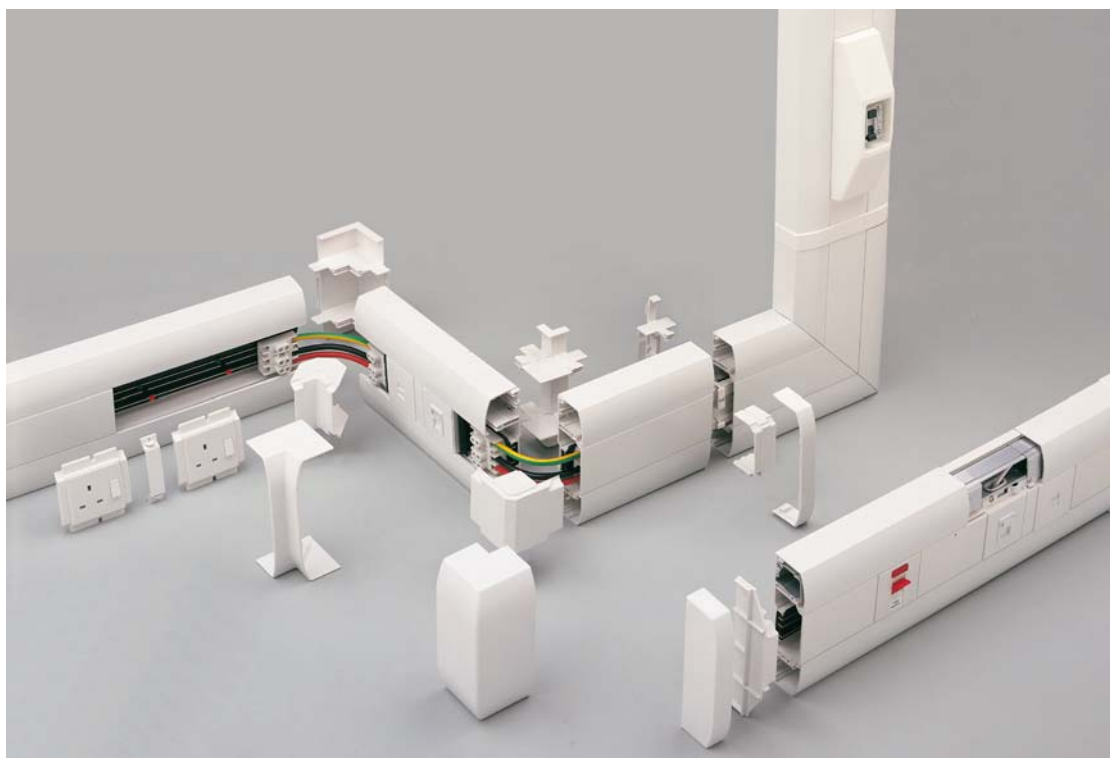
1909WHI



1930WHI



1933WHI



1909WHI	10
CENTRAL COVER COUPLER	
1930WHI	10
ACCESSORY SPACER	
1933WHI	3m
BUSBAR SECTION FOR DADO TRUNKING WITHOUT BUSBARS. SUPPLIED IN 3M LENGTHS	
11817PS	100
CABLE TERMINATION & BUSBAR COVER SCREWS	
11827PS	100
FIXING SCREW BUSHES	

PINNACLE

RANGE INTRODUCTION

When it comes to providing direct bench top access to low voltage electrical, communications and data services, MK Pinnacle is the flexible and versatile solution.

Styled to the same high standards as the MK Logic Plus™ range, it features a high quality finish, a curved design and twin segregated compartments. These features mean MK Pinnacle is the bench top solution for laboratories, schools and workshops.

HOW TO SPECIFY

A bench top trunking system manufactured from recycled PVCu designed to compliment MK Logic Plus accessories. Pre-fabricated corners to provide maximum flexibility, systems integrity and protection. Two separate compartments to provide cable segregation with the option to sub-divide the main compartment by means of a clip-in cable divider. Coupler sets provide fixing between two units while maintaining IP4X classification.

FEATURES & BENEFITS

UNIQUE CURVED APPEARANCE

Total physical and visual integration with the MK Logic Plus™ range

DESIGNED TO MEET THE 'HEAVY DUTY' REQUIREMENTS OF BS 4678 PART 4

Offers high levels of mechanical protection and electrical safety

VERSATILITY

MK Pinnacle is versatile. Available in single or double configuration, it can be installed with a choice of two profile heights and fascia angles

MADE FROM 100% PVCu

Pinnacle is robust, easily manipulated on site and non-corrosive

ALL EXTRUSIONS MANUFACTURED FROM 100% RECYCLED MATERIAL*

*Based on 2014 consumption.



Technical Hotline
+44 (0)1268 563720

Pinnacle

CABLE MANAGEMENT
PERIMETER AND
DISTRIBUTION

PRE-FABRICATED CORNERS

Pre-fabricated internal and external corners are available for maximum flexibility, system integrity and protection.

USE PINNACLE WITH A WIDE SELECTION OF MK ACCESSORY RANGES

CABLE SEGREGATION

Two separate compartments provide cable segregation with the facility to further subdivide the main compartment by means of a clip-in cable divider.

COUPLER SETS FOR GREATER STRENGTH AND PROTECTION
Wherever two units need to be joined, coupler sets maintain the extra protection of Pinnacle's Heavy Duty and IP4X classification.

BENCH UNITS

One gang, two gang, two gang plus one gang and three gang bench units are available as single and two sided assemblies.

VERSATILITY

Available in single or double configuration, Pinnacle can be installed with a choice of two profile heights and fascia angles. The system may be installed horizontally or vertically.

UNDERSHELF

Pinnacle can be installed safely in any orientation, even conveniently tucked away under a shelf, giving easy and discreet access to power and data outlets.



Pinnacle

Trunking

End Caps

Coupler Set*



PTS2WHI **4m**
SINGLE TRUNKING 2 METRE LENGTH
SUPPLIED WITH LIDS
90MM HIGH X 105MM WIDE
PTS3WHI **6m**
SINGLE TRUNKING 3 METRE LENGTH
SUPPLIED WITH LIDS
90MM HIGH X 105MM WIDE

PECSWHI

10

PCWHI

10

***COUPLER SETS**
To maintain Heavy Duty
and IP4X classification
both coupler and joint cover must be used



PTS2WHI **4m**
PTS3WHI **6m**

PECSWHI

10

PCWHI
CONSISTS OF COUPLER
AND JOINT COVER

10

***COUPLER SETS**
To maintain Heavy Duty
and IP4X classification
both coupler and joint cover must be used



PTD2WHI **2m**
PTD3WHI **3m**

PECDWHI
PAIR

5

PCWHI
CONSISTS OF COUPLER
AND JOINT COVER

10

***COUPLER SETS**
To maintain Heavy Duty
and IP4X classification
both coupler and joint cover must be used



Technical Hotline
+44 (0)1268 563720

Pinnacle

CABLE MANAGEMENT
PERIMETER AND
DISTRIBUTION

Internal Corner

FABRICATED



PICLWHI

1

External Corner

FABRICATED



PECLWHI

1

Cable Divider

2 METRE LENGTHS



PD2WHI

20m

Cable Retainer



VTS11WHI

10

PICLWHI

1

PECHWHI

1

PD2WHI

20m

VTS11WHI

10

PD2WHI

20m

VTS11WHI

10

Bench Units

ONE GANG AND TWO GANG



PBUS1WHI

PBUD1WHI



PBUS2WHI



PBUD2WHI

PBUS1WHI 1
1 GANG SINGLE BENCH
UNIT WITH 1 GANG
ACCESSORY BOX
(VTS6035)

PBUD1WHI 1
Supplied complete with
accessory boxes, end caps and
pre-cut lids.

DIMENSIONS

PBUS1:
105mm high
90mm deep
130mm wide

PBUD1:
105mm high
185mm deep
130mm wide

PBUS2WHI 1
2 GANG
SINGLE BENCH UNIT
WITH
2 GANG ACCESSORY BOX
(VTS7025)

PBUD2WHI 1
Supplied complete with
accessory boxes, end caps and
pre-cut lids.

DIMENSIONS

PBUS2:
105mm high
90mm deep
190mm wide

PBUD2:
105mm high
185mm deep
190mm wide

TWO GANG PLUS ONE GANG



PBUS21WHI



PBUD21WHI

PBUS21WHI 1
Supplied complete with
accessory boxes, end caps and
pre-cut lids.

DIMENSIONS

PBUS21:
105mm high
90mm deep
290mm wide

PBUD21WHI 1
2 + 1 GANG
DOUBLE BENCH UNIT
WITH 2 X 2 GANG
(VTS7025)
AND 2 X 1 GANG
(VTS6035)
ACCESSORY BOXES

Supplied complete with
accessory boxes, end caps and
pre-cut lids.

DIMENSIONS

PBUD21:
105mm high
185mm deep
290mm wide

THREE GANG



PBUS3 WHI



PBUD3WHI

PBUS3WHI 1
3 GANG
SINGLE BENCH UNIT
WITH 3 GANG
ACCESSORY BOX
(VTS8028)

Supplied complete with
accessory boxes, end caps
and pre-cut lids.

DIMENSIONS

PBUS3:
105mm high
90mm deep
250mm wide

PBUD3WHI 1
3 GANG
DOUBLE BENCH UNIT
WITH 2 X 3 GANG
ACCESSORY BOXES
(VTS8028)

Supplied complete with
accessory boxes, end caps
and pre-cut lids.

DIMENSIONS

PBUD3:
105mm high
185mm deep
250mm wide



Technical Hotline
+44 (0)1268 563720

Pinnacle

CABLE MANAGEMENT
PERIMETER AND
DISTRIBUTION

Accessory Boxes

Mounting Frames

Trunking Cover Spares

2 AND 3 METRE LENGTHS



VTS6035WHI



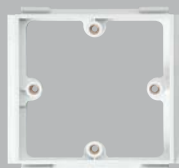
VTS25SWHI



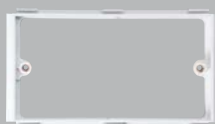
VTS7035WHI



VTS8028 WHI



VTS6000WHI



VTS7000 WHI



PSC2WHI



PCCS2WHI



PCCD2WHI

VTS6025WHI

1 GANG OUTLET BOX
25MM DEEP
HORIZONTAL AND
VERTICAL MOUNTING

25

VTS6035WHI

1 GANG OUTLET BOX
35MM DEEP
HORIZONTAL AND
VERTICAL MOUNTING

25

VTS7025WHI

2 GANG OUTLET BOX
25MM DEEP

10

VTS8035

3 GANG OUTLET BOX
35MM DEEP

5

VTS7035WHI

2 GANG OUTLET BOX
35MM DEEP

10

VTS8028WHI

3 GANG OUTLET BOX
28MM DEEP

5

VTS25SWHI

SOCKET SPACER TO
ESTABLISH THE MINIMUM
DISTANCE BETWEEN
ACCESSORIES

10

K3716

BOX EARTH TERMINAL

100

VTS6000WHI

1 GANG
ACCESSORY MOUNTING
FRAME

10

VTS7000WHI

2 GANG
ACCESSORY MOUNTING
FRAME

5

PSC2WHI

STRAIGHT COVER

20m

PCCS2WHI

CURVED COVER FOR
SINGLE TRUNKING (2M)

20m

PCCD2WHI

CURVED COVER
FOR DOUBLE
TRUNKING (2M)

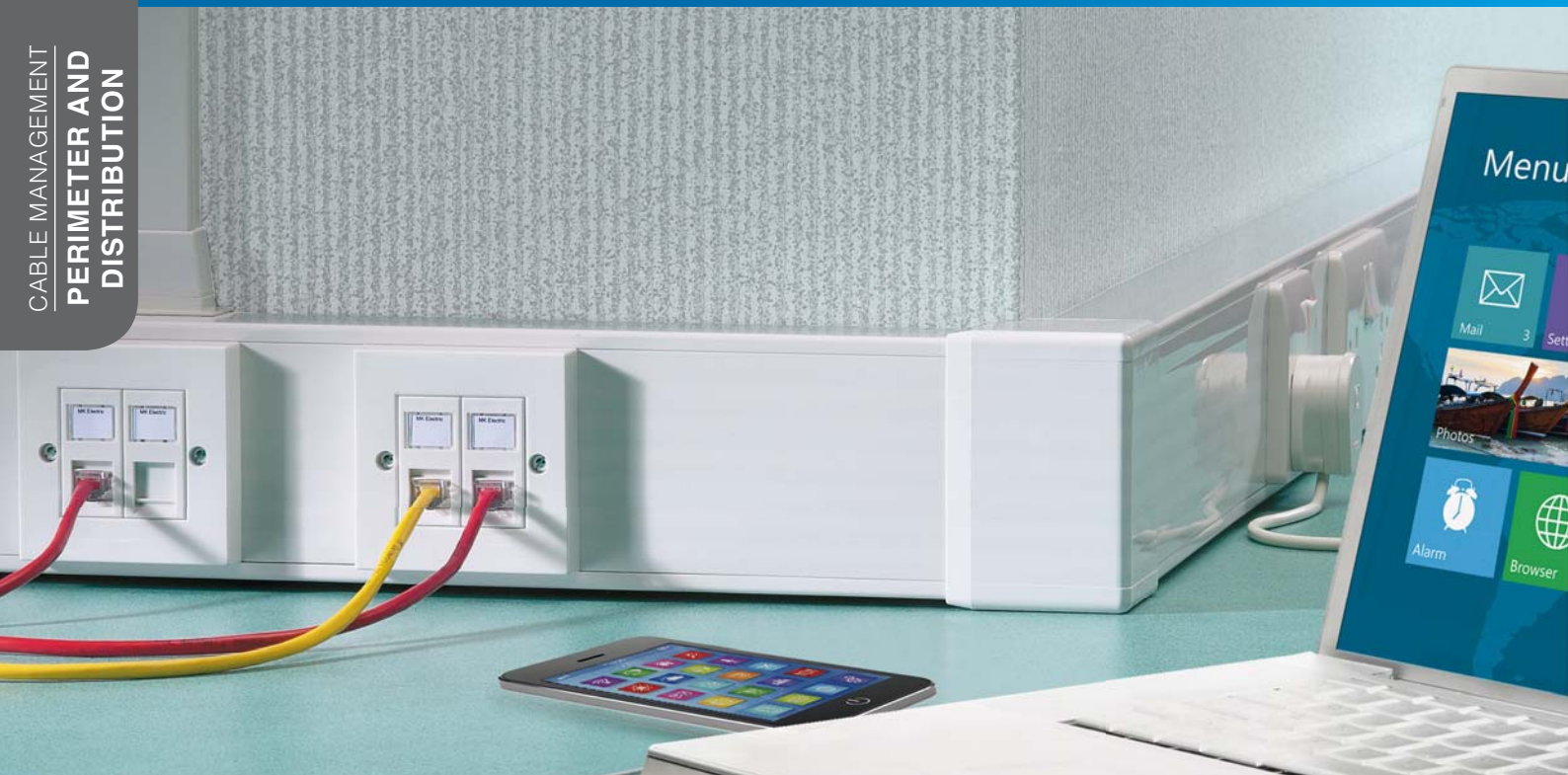
10m

VTSMH1WHI
MCB/RCD HOUSING
WITH COVER
(ACCESSORIES NOT
PROVIDED)

1

Mounts directly to trunking
to accept up to 2 x one
module products from the
Sentry range of MCBs and
RCDs (excluding one module RCB0s).





PREMIER

RANGE INTRODUCTION

Premier is a modern integrated trunking system which provides the means to distribute power, data and telecom services around buildings.

A wide range of snap fit mouldings, including reducers, make it easy to run continuous lengths of trunking as cable feeders and, where required, to provide dado trunking with the necessary power, data and telecom outlets.

Premier trunking is also compliant with Cat 5e and 6 data cable installation, and the MK Aspect and Logic Plus accessory ranges complement the style and finish of Premier Trunking.

HOW TO SPECIFY

An modern integrated trunking system compliant with Cat 5e and 6. Manufactured from recycled PVCu and designed to compliment MK Logic Plus accessories. Clip on covers provide continuous access for wiring devices and aid assembly and installation. Internal and external corners eliminate the need to mitre corners whilst ensuring data bend radiuses. Internal cable dividers provide segregation of services and adaptors provide integration to minimum trunking for local distribution.

FEATURES & BENEFITS

SIMPLE, CLEAN LINES

Stylish and unobtrusive finish

WIDE RANGE OF INTEGRATED COMPONENTS

Maximises versatility in application

CLIP-ON COVERS PROVIDE CONTINUOUS ACCESS FOR WIRING MODIFICATIONS

Easy to assemble and install

DATA CORNERS PROVIDE 32MM RADIUS COMPATIBLE WITH CAT 5E AND CAT 6 DATA CABLES

Enables data cables to perform to their maximum capabilities (NCT1050 only)

TAPERED JOINTS PROVIDE COMPLETE PROTECTION AT JUNCTIONS MASKING CUT ENDS

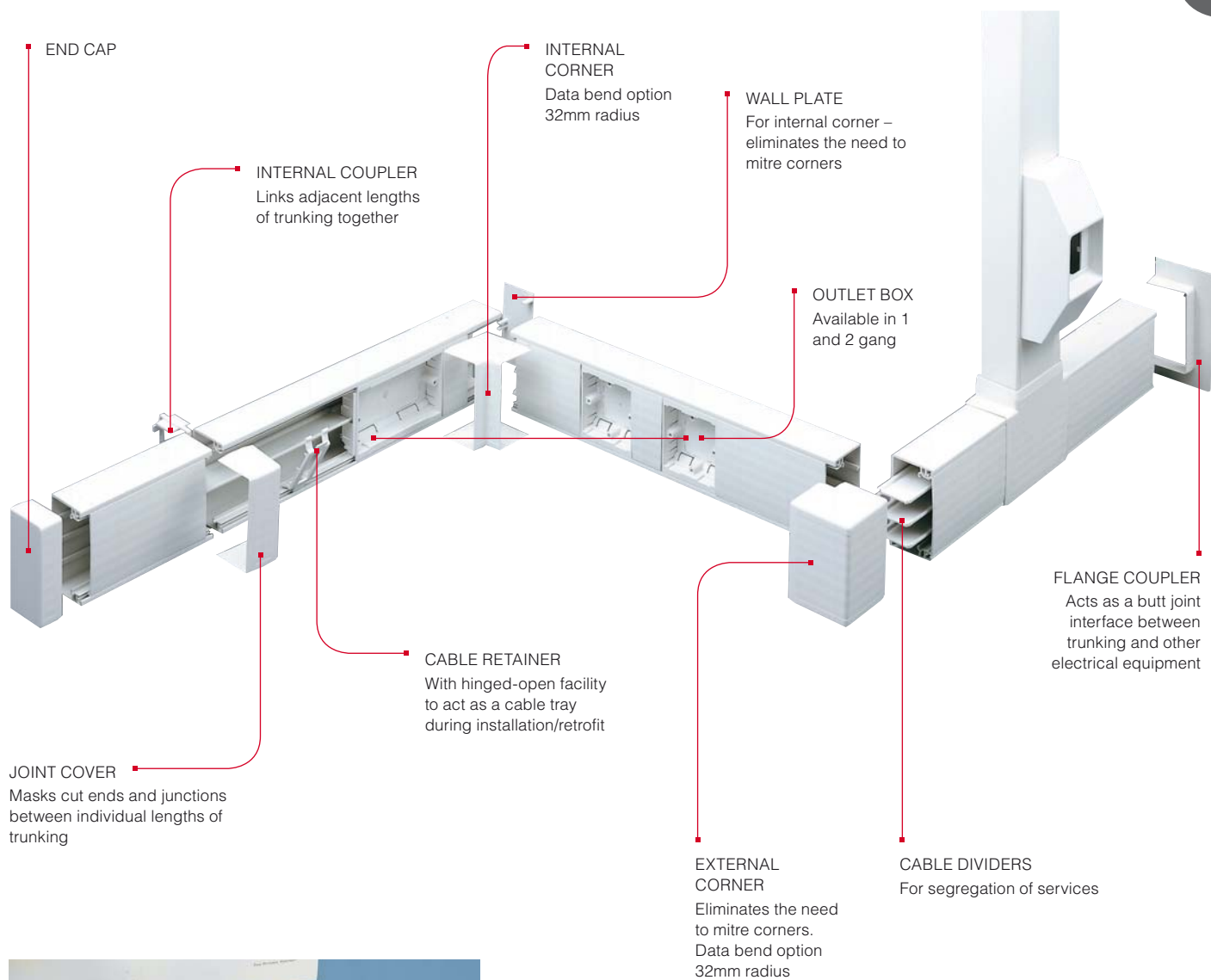
Uniform and neat finish to any installation

MADE FROM 100% PVCU

Premier is both robust and easily workable on site

ALL EXTRUSIONS MANUFACTURED FROM 100% RECYCLED MATERIAL*

*Based on 2014 consumption.



Adaptors provide integration with Ega Mini and Communication Trunking for local distribution.



Moulded flat cross available for all distribution trunking.

Material:
Pvcu Colour:
White

Trunking

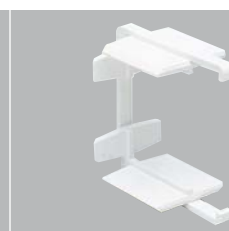
3 METRE
LENGTHS

2 METRE
LENGTHS

SPARE
TRUNKING LID
3 METRE
LENGTHS

Internal Coupler

MOULDED



50 X 50MM	NCT5050WHI	12m	NCT5050D1WHI*	12m	NCT50LIDWHI	12m	NCI5050WHI	5
75 X 50MM	NCT7550WHI	12m	NCT7550D1*	12m	NCT50LIDWHI	12m	NCI7550WHI	5
75 X 75MM	NCT7575WHI	12m	NCT7575D1*	8m	NCT75LIDWHI	12m	NCI7575WHI	5
100 X 40MM	NCT1040WHI	12m	NCT1040D1*	8m	NCT100LIDWHI	12m	NCI1040WHI	5
100 X 50MM	NCT1050WHI	12m	NCT1050D1*	8m	NCT100LIDWHI	12m	NCI1050WHI	5
100 X 100MM	NCT1010WHI	12m	NCT1010D1*	8m	NCT100LIDWHI	12m	NCI1010WHI	5

* 2 metre lengths are available
for NON UK markets

External Corner

MOULDED

WITH
DATA CORNER
MOULDED

Internal Corner

MOULDED

WITH
DATA CORNER
MOULDED



50 X 50MM	NAE5050WHI	2		NAI5050WHI	2	
75 X 50MM	NAE7550WHI	2		NAI7550WHI	2	
75 X 75MM	NAE7575WHI	2		NAI7575WHI	2	
100 X 40MM	NAE1040WHI	2		NAI1040WHI	2	
100 X 50MM	NAE1050WHI	2	NDAE1050WHI	2	NAI1050WHI	2
100 X 100MM	NAE1010WHI*	1		NAI1010WHI*	1	

* Fabricated

Data corner provides
32mm (1¼" or 1.25") radius
compatible with Cat 5e and 6
data cables

* Fabricated

Data corner provides
32mm (1¼" or 1.25")
radius compatible with
Cat 5e and 6 data cables



Technical Hotline
+44 (0)1268 563720

Premier

CABLE MANAGEMENT
PERIMETER AND
DISTRIBUTION

Joint Cover

MOULDED



Cable Retainer

MOULDED



Cable Divider

3 METRE
LENGTHS



End Cap

UNIVERSAL
FOR USE AT
EITHER END
MOULDED



NJC5050WHI	10	NBP50WHI	10	NVS50WHI	36m	NEP5050WHI	5
NJC7550WHI	10	NBP75WHI	10	NVS50WHI	36m	NEP7550WHI	5
NJC7575WHI	10	NBP75WHI	10	NVS75WHI	36m	NEP7575WHI	5
NJC1040WHI	5	NBP100WHI	10	NVS40WHI	36m	NEP1040WHI	5
NJC1050WHI	5	NBP100WHI	10	NVS50WHI	36m	NEP1050WHI	5
NJC1010WHI	5	NBP100WHI	10	NVS100WHI	36m	NEP1010WHI	5

Flat Angle

MOULDED



WITH
DATA CORNER
MOULDED



Flat Tee

MOULDED



WITH
DATA CORNER
MOULDED



Double Set

FABRICATED



NAF5050WHI	2		NTF5050WHI	2		NMD5050WHI	2
NAF7550WHI	2		NTF7550WHI	2			
NAF7575WHI	2		NTF7575WHI	2			
NAF1040WHI	2		NTF1040WHI	2			
NAF1050WHI	2	NDAF1050WHI	2	NTF1050WHI	2	NDAF1050WHI	2
NAF1010WHI*	1		NTF1010WHI*	1			

* Fabricated

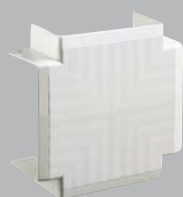
Data corner provides 32mm
(1¼" or 1.25") radius compatible
with Cat 5e and 6 data cables

* Fabricated

Data corner provides 32mm
(1¼" or 1.25") radius compatible
with Cat 5e and 6 data cables

Flat Cross

MOULDED



Flange Coupler



Wall Plates

FOR INTERNAL
CORNERS
MOULDED



50 X 50MM	NCU5050WHI	1	NFC5050WHI	1	NWP5050WHI	5
75 X 50MM	NCU7550WHI	1	NFC7550WHI	1	NWP7550WHI	5
75 X 75MM	NCU7575WHI	1	NFC7575WHI	1	NWP7575WHI	5
100 X 40MM	NCU1040WHI	1	NFC1040WHI	1	NWP1040WHI	5
100 X 50MM	NCU1050WHI	1	NFC1050WHI	1	NWP1050WHI	5
100 X 100MM	NCU1010WHI	1	NFC1010WHI	1		

Mounting Frames



Accessory Spacer



VTS6000WHI

1 GANG
ACCESSORY MOUNTING FRAME

VTS7000WHI

2 GANG
ACCESSORY MOUNTING FRAME

10

5

NSP100WHI

ACCESSORY SPACER
FOR 100MM WIDE
TRUNKING

10



Technical Hotline
+44 (0)1268 563720

Premier

CABLE MANAGEMENT
PERIMETER AND
DISTRIBUTION

MCB/RCD Housings



VTSKMH1WHI

VTS/KMH includes cover.
Accessory not provided

Accessory Boxes

ONE GANG
25MM & 35MM DEEP FOR
100MM WIDE TRUNKING



1

VTS6025WHI
VTS6035WHI

35mm deep boxes are only
for use in 100 x 50mm
and 100 x 100mm trunking

TWO GANG
25MM & 35MM DEEP FOR
100MM WIDE TRUNKING



25
25

VTS7025WHI
VTS7035WHI

35mm deep boxes are only
for use in 100 x 50mm
and 100 x 100mm trunking

THREE GANG
28MM & 35MM DEEP FOR
100MM WIDE TRUNKING



10
10

VTS8028WHI
VTS8035
K3716

BOX EARTH TERMINAL

5
5
100

Norwich Trunking is a very popular system for use in schools, offices and commercial installations, because of its durability and the facility to retrofit extra sockets and outlets as required.

Standard Length: 3 metres

Material: PVCu

Colour: White

- 2 sizes with one or two compartments
- Easy to add sockets and outlets once installed
- Secure lid fit enables wall or ceiling mounting
- Unobtrusive and neat
- Easy to assemble and install
- Durable and impact resistant to Heavy Classification BS 4678 Part 4
- All extrusions manufactured from 100% recycled material*

Profile Lengths

Single Compartment Trunking

3 METRE
LENGTHS



NBT3WHI 12m
100 X 25MM
SINGLE COMPARTMENT

3 METRE
LENGTHS



NBT4WHI 12m
100 X 40MM
SINGLE COMPARTMENT

Two Compartment Trunking

3 METRE
LENGTHS



NBT3TCWHI 12m
100 X 25MM
TWO COMPARTMENT

3 METRE
LENGTHS



NBT4TCWHI 12m
100 X 40MM
TWO COMPARTMENT

HOW TO SPECIFY

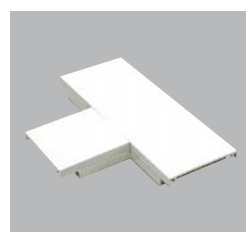
A one or two compartment trunking system manufactured from recycled PVCu and designed to compliment MK Logic Plus accessories. Durable and impact resistant to Heavy Classification BS 4678 Part 4. Clip on covers and accessories aid easy assembly and installation whilst a wide range of accessories provide maximum versatility of installation.



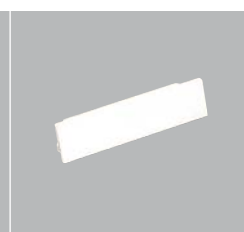
Fittings

Flat Tees

3 METRE
LENGTHS



End Caps



1 COM 100 X 25MM	NTF3WHI 1	NEP3WHI 10
1 COM 100 X 40MM	NTF4WHI 1	NEP4WHI 10
2 COM 100 X 25MM	NTF3TCWHI 1	NEP3WHI 10
2 COM 100 X 40MM	NTF4TCWHI 1	NEP4WHI 10

* Based on 2014 consumption.

Fittings

Flat Angle

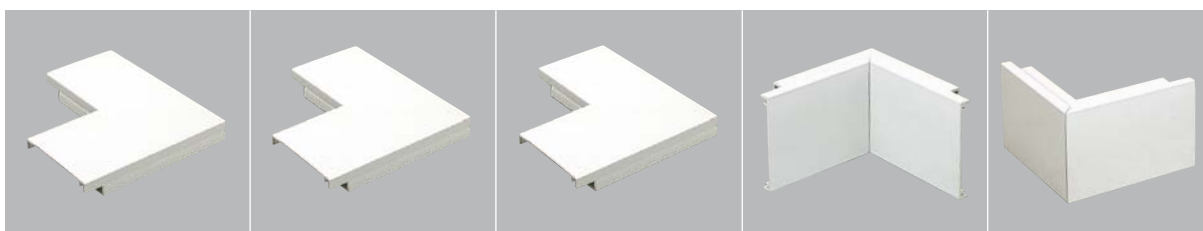
Flat Angle

SMALL
COMPARTMENT
TO OUTSIDE

SMALL
COMPARTMENT
TO INSIDE

Internal Corner

External Corner



1 COM 100 X 25MM	NAF3WHI 1			NAI3WHI 1	NAE3WHI 1
1 COM 100 X 40MM	NAF4WHI 1			NAI4WHI 1	NAE4WHI 1
2 COM 100 X 25MM		NAF3TCWHI 1	NAF3TCSIWHI 1	NAI3TCWHI 1	NAE3TCWHI 1
2 COM 100 X 40MM		NAF4TCWHI 1	NAF4TCSIWHI 1	NAI4TCWHI 1	NAE4TCWHI 1

Internal Couplings

Accessory Mounting Frames

1 GANG

2 GANG

Accessory Mounting Frame with backbox

1 GANG

Spare Trunking Lid

3 METRE
LENGTHS



1 COM 100 X 25MM	NCI3WHI 10	NSO1WHI 10	NSO2WHI 5	NSO1TWHI 5	NBT100LIDWHI 12m
1 COM 100 X 40MM	NCI4WHI 10	NSO1WHI 10	NSO2WHI 5	NSO1TWHI 5	NBT100LIDWHI 12m
2 COM 100 X 25MM	NCI3WHI 10	NSO1WHI 10	NSO2WHI 5	NSO1TWHI 5	NBT100LIDWHI 12m
2 COM 100 X 40MM	NCI4WHI 10	NSO1WHI 10	NSO2WHI 5	NSO1TWHI 5	NBT100LIDWHI 12m